

## Installation and Operator Manual





June 2019

ComCo Systems, INC. A division of Communications Conveyor Company

P/N: 500458 Rev. A

*This publication contains materials protected by copyright. No part of this publication may be reproduced in any form or used as the basis for the sale or manufacture of apparatus without prior written consent by ComCo Systems.*

©2008 ComCo Systems INC All rights reserved

*Some of the materials and applications described in this publication may be protected under one or more of the following US patents: DES272076, 4180354, 4971481, 4984939, 5584613, 6039510, or other Patents Pending.*

<b>System Features</b>	<b>pg. 3</b>
Manual Teller Unit	
Single Sided Teller Chute	
Dual Sided Manual Teller Unit	
Customer Unit	
Blower	
System Controller	
 <b>Operation Manual Teller Unit</b>	 <b>pg. 4</b>
Operations	
Specification	
Parts List	
 <b>Single-Sided Chute Teller Unit</b>	 <b>pg. 12</b>
Operations	
Specification	
Parts List	
 <b>Dual-Sided Manual Teller Unit</b>	 <b>pg.18</b>
Cut Sheet	
 <b>Customer Unit</b>	 <b>pg. 20</b>
Operations	
Specification	
Parts List	
Installation	
 <b>Blower</b>	 <b>pg. 28</b>
Operations	
Specification	
Parts List	
 <b>System Controller</b>	 <b>pg. 34</b>
Parts List	
 <b>Carriers</b>	 <b>pg. 36</b>
Operations	
Specification	
Parts List	
 <b>Installation &amp; Maintenance</b>	 <b>pg. 47</b>
System Setup and Installation	
Field Wiring Diagram	
 <b>Help Desk Information</b>	 <b>pg. 51</b>
Return Materials Authorization Procedure	
Contact Information	

## System Features

The Model 922 is an overhead pressure/vacuum system that utilizes 4 x 7" tubes and carriers. The carrier travels from the teller unit to the customer unit under vacuum and returns under pressure. The blower unit is located near the customer unit.

- The Model 922 is configured with five major subsystems:

1. Single-Sided Chute Teller Unit P/N: 200863
2. Single-Sided Manual Teller Unit P/N: 200430
3. Dual-Sided Manual Teller Unit: P/N: 200747
4. Blower Unit: P/N: 200217
5. Customer Unit (CU) P/N: 200875
6. System Controller P/N: 200703



**Single-Sided Teller Chute (STC)**  
**STC-4700-200863**

Door less operating unit, which is suspended from the ceiling, typically over the countertop.



**Dual Sided Teller Unit (TU)**  
**TU-900-200747**

Dual Manual operating doors, which is suspended from the ceiling, typically over countertop.



**522 System Controller**  
**SC-521-200703**

System Controller can be mounted virtually anywhere for convenient service.



**Teller Unit (TU)**  
**TU-900-200430**

Manual operated door unit, which is suspended from the ceiling, typically over countertop.



**1 to 3 Single Pack UL Blowers**  
**BM-200-200217**

Features (Ea. Single Pack):  
1 Power Cards 115Vac/15A  
1 Blower for pressure  
1 Blower for vacuum

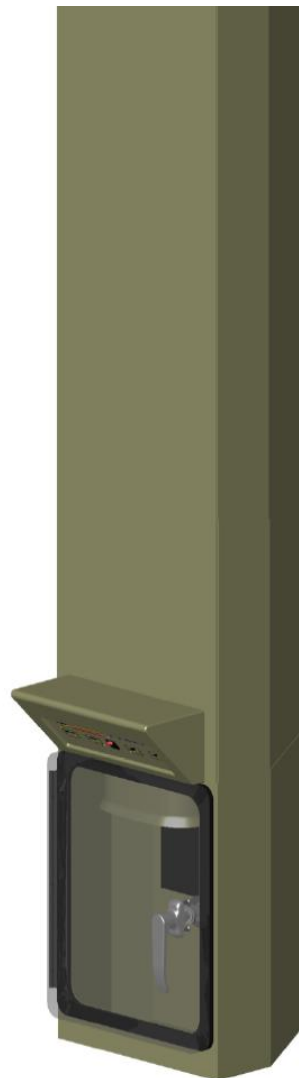


**Customer Unit (CU)**  
**CU-922-200875**

Fully automatic door operation with optional 2-way video unit.

# ***Single Sided Manual Teller Unit***

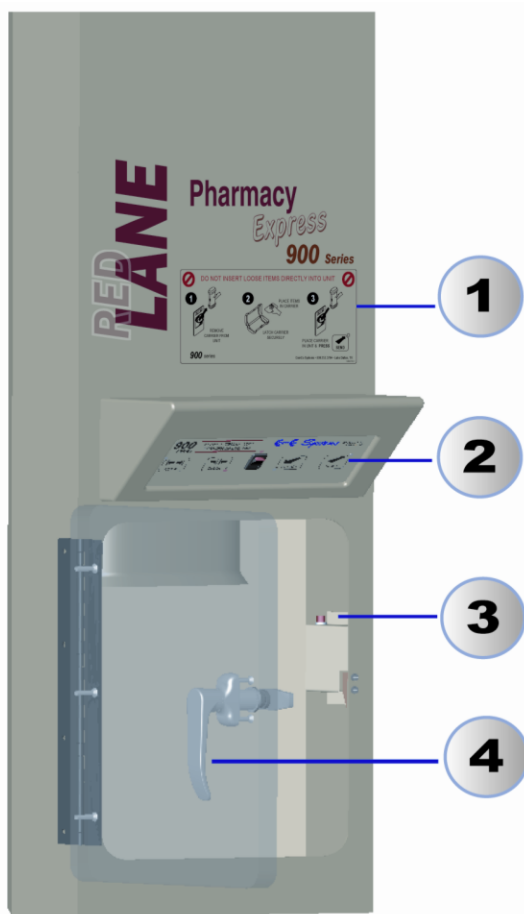
Model: ***TU-900-200430***



## Manual Operated Teller Unit (TU) (P/N: 200430)

The manual teller unit utilizes a manually operated door. The teller unit's door *MUST* remain closed during a send or recall cycle for the system to function properly. The teller unit door should *only* be opened when a carrier is being inserted to send to the customer unit, or immediately after a carrier has arrived from the customer unit. *Opening the door will cancel operation.* To resume operation close door and press RECALL or SEND.

Please note the reference guide in *Fig. 1.0*.



**Fig. 1.0**

### 1. Instruction Panel

Reference to operator instructions for system start up for ready state and office closing shut down.

### 2. Control Panel

Customer Manual Door Open/Close

System Power On/Off Switch

Retrieve Carrier from Customer

Send Carrier to Customer

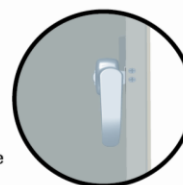
### 3. Door Indicator

Door light indicator will be illuminated when both the Customer Unit and Teller doors are closed. If the indicator is extinguished the system will not operate.

Light All Doors Closed Indicator

### 4. Door Handle

Door handle must be in the latched position to SEND or RECALL carrier. Unlatch handle to open door to retrieve carrier.



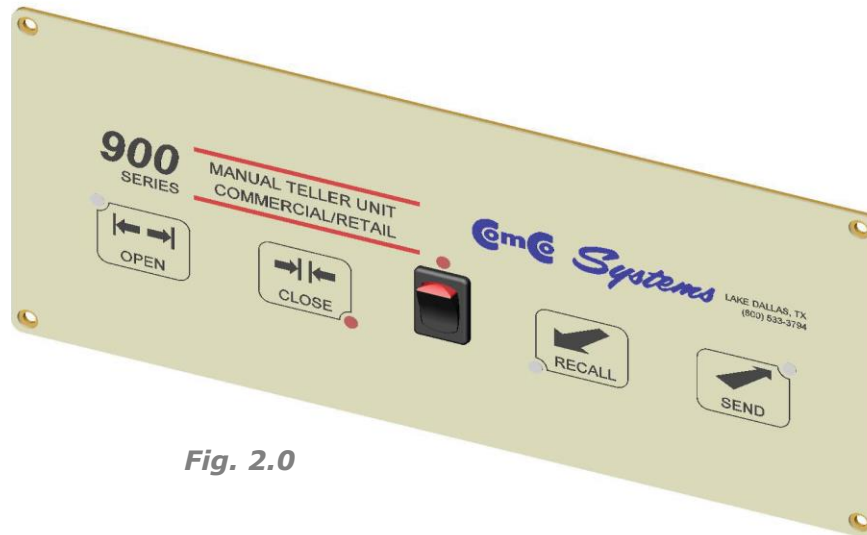
Door Latched



Door Unlatched

**\*\*NOTE:** Door Close Lights on both the switch panel and the light next to the manual door handle *MUST* be ON to function properly!

### **Teller Unit** (P/N: 200430) Switch Operating instructions



**Fig. 2.0**

#### **ON/OFF**

The power switch cycles the complete system (Inside Unit, Outside Unit & Blowers). Power ON all lights will be present and opens the customer unit door. Power OFF complete system power down and closes the customer unit door. If installed it will power down the Customer Video Module (CVM).

**DOOR OPEN** Opens the customer unit door.

**DOOR CLOSE** Closes the customer unit door.

#### **SEND**

Sends a carrier to the customer unit. The teller unit door must be closed in order to send a carrier to the customer unit. The SEND switch is deactivated when there is a carrier present at the customer unit.

#### **RECALL**

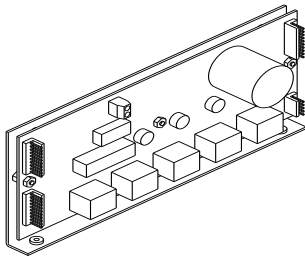
Recalls a carrier from the customer unit. The carrier settle switch in the customer unit does not need to be engaged for the teller to initiate a recall cycle. The teller unit door must be closed in order to recall a carrier from the customer unit.

## Teller Unit (P/N: 200430)

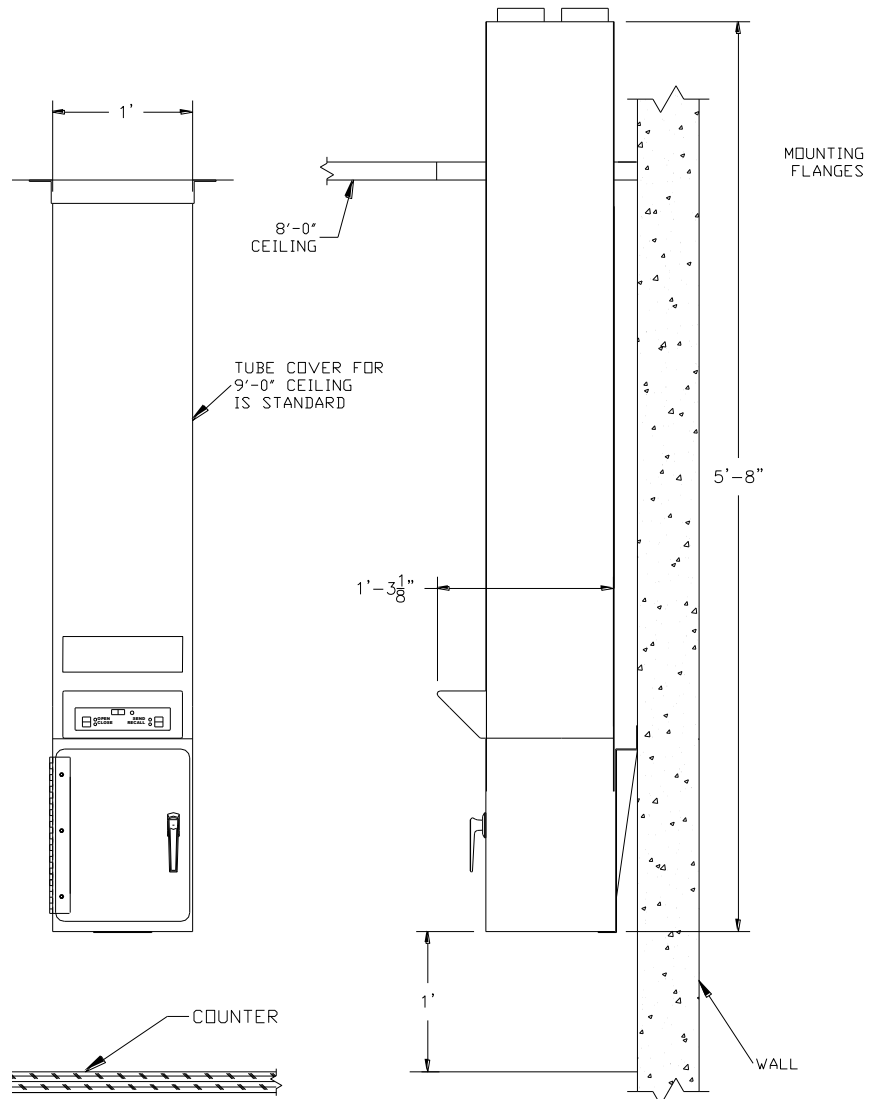
### Dimensional & Electrical Specifications

Item	Measurements	Value
Teller Unit (TU-900-200430)	Nominal Voltage Current (max)	24 VDC 2 amps

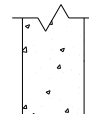
### System Controller (P/N: SC-521-200155)



See Appendix A  
For System Settings



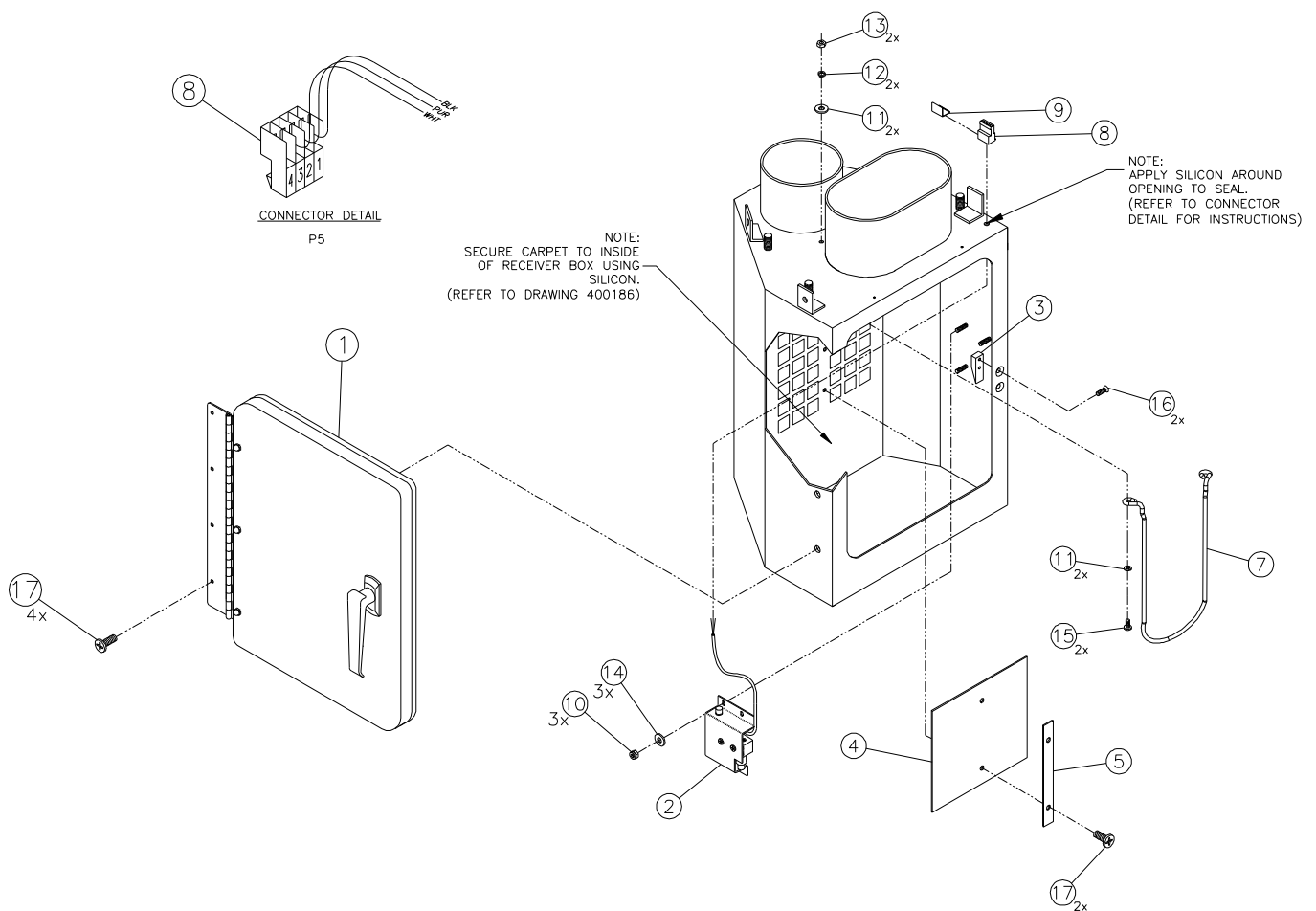
MODEL 900 PNEUMATIC TUBE SYSTEMS  
TELLER UNIT DETAILS





### Teller Unit Receiver Box (P/N: 200720)

#### Parts Breakaway:



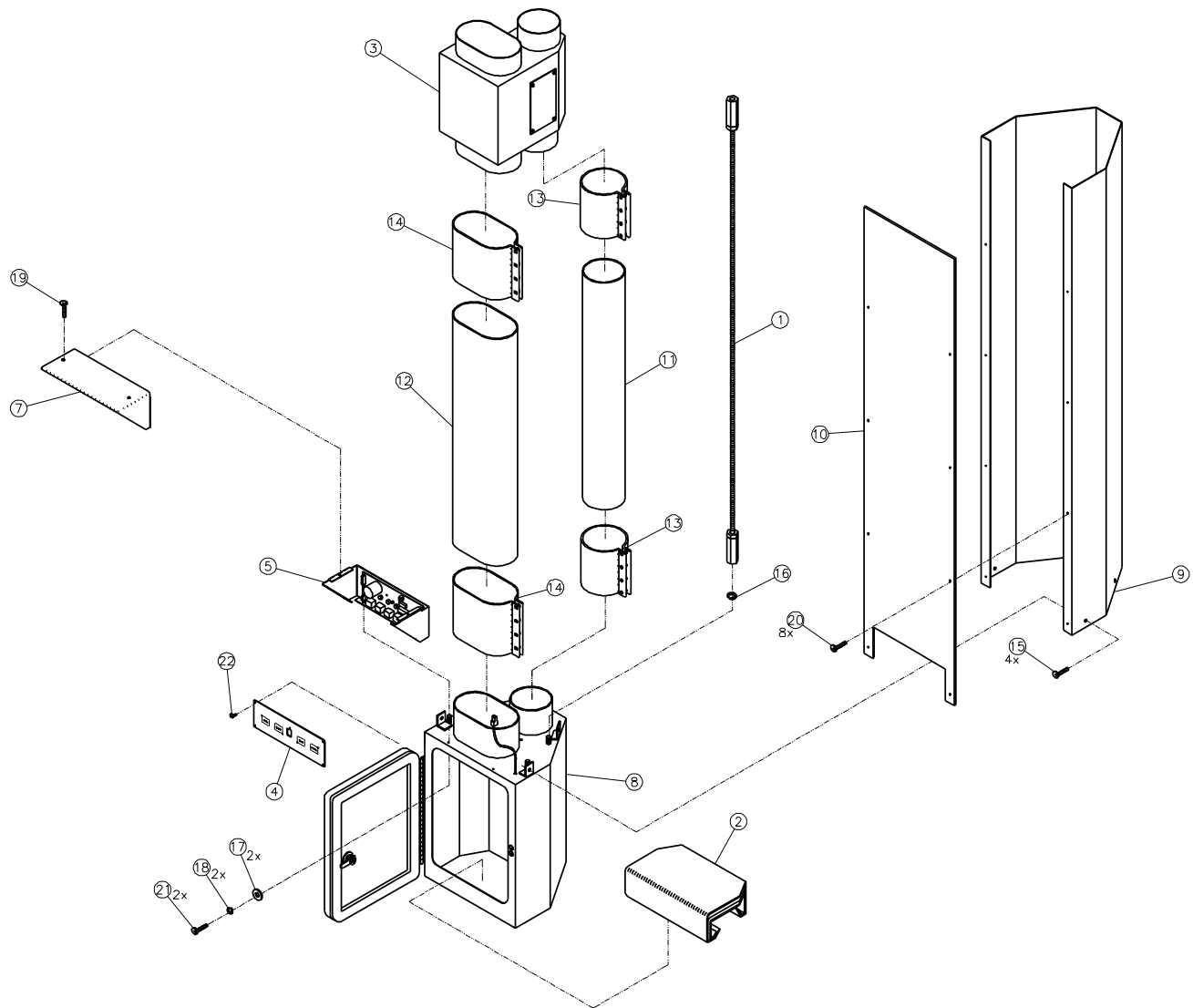
## Teller Unit Receiver Box (P/N: 200720)

### Parts Descriptions:

<i>Item</i>	<i>M</i>	<i>Description</i>	<i>Qty</i>	<i>P/N</i>
17	M	SCREW, 10-32 x 3/8" PTH, SS	6	910032
16	M	SCREW, 8-32 x 1/4" PFH, SS	2	910032
15	M	SCREW, 8-32 x 7/8" PPH, ZINC	2	910032
14	M	WASHER, FLAT, #6	3	910025
13	M	NUT, 8-32	2	910006
12	M	WASHER, LOCK, #8	2	910005
11	M	WASHER, FLAT, #8	4	910004
10	M	NYLOCK, NUT, 6-32	3	910003
9	M	COVER, CONNECTOR, PANDUIT, 4 PIN	1	603155
8	M	CONNECTOR, PANDUIT, 4 PIN	1	603154
7	M	GUIDE, CARRIER, 521	1	400255
6	M	CARPET, RECEIVER BOX, 900 MTU	1	400186
5	M	STRAP MEMBRANE, 900MTU	1	400185
4	M	MEMBRANE, VALVE, 900MTU	1	400184
3	M	CATCH, DOOR LATCH, EZY FLOW A	1	400178
2	M	ASSEMBLY, DOOR CLOSED SWITCH, 900MTU	1	200471
1	M	ASSEMBLY, DOOR, 900MTU	1	200027

### Teller Unit (P/N: 200430)

#### Parts Breakaway:

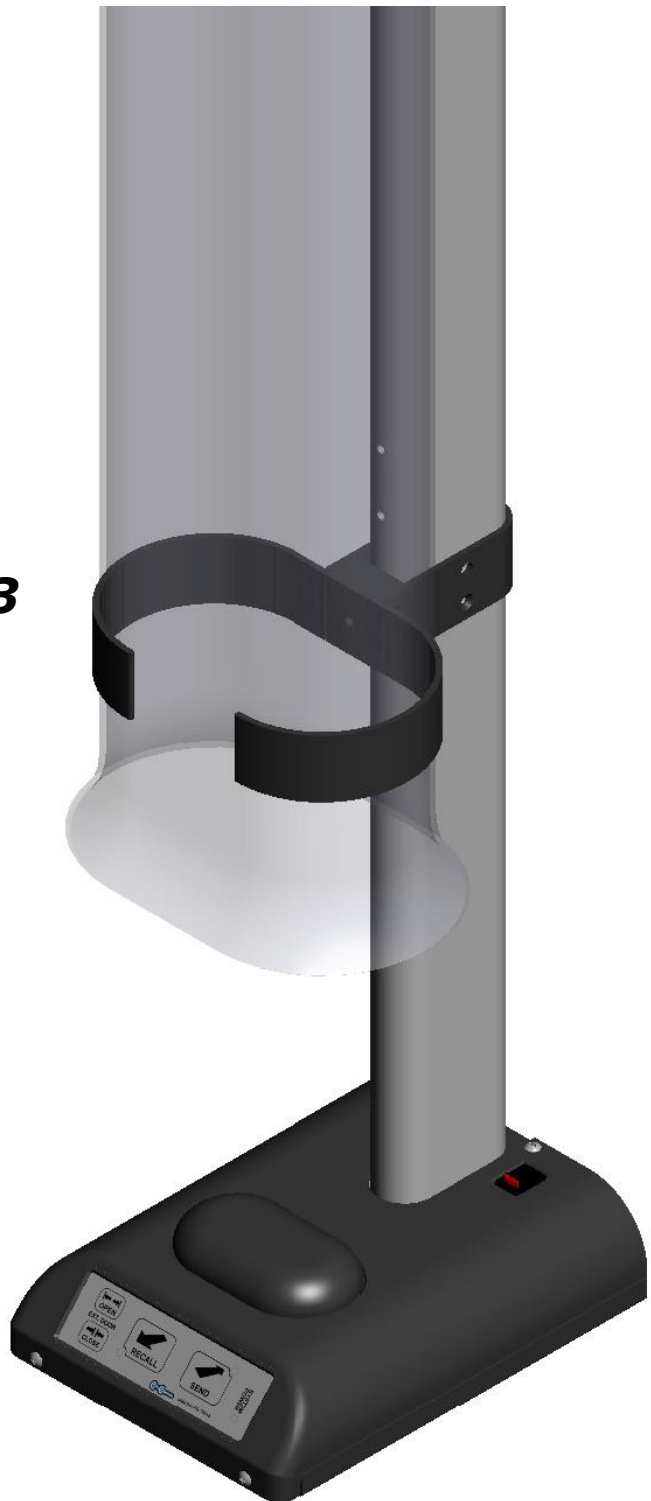


**Teller Unit (P/N: 200430)**
Parts Descriptions:

<i>Item</i>	<i>M/F</i>	<i>Description</i>	<i>Qty</i>	<i>P/N</i>
1		Assembly, Support, All Thread, 900 MTU	4	200025
2		Assembly, Landing Pad, 900 MTU	1	200028
3		Assembly, Check Valve, 900 MTU	1	200048
4		Assembly, Teller Controls, 900 MTU	1	200392
5		Assembly, Plate, Control, 900 MTU	2	200464
6		Assembly, Installation, Wall Mount, 900 MTU	2	200468
7		Assembly, Cover Controls, 900 MTU	1	200557
8		Assembly, Receiver Box, 900 MTU	1	200720
9		Cover, Tube, Rear, 900 MTU	1	400003
10		Cover, Tube, Front, 900 MTU	1	400080-1
11		Tube, 4", Standard (Cut to 36 ½")	1	613604
12		Tube, 4x7, Standard (Cut to 37 ½")	1	613610
13		Sleeve, Bolt, 4"	2	613694
14		Sleeve, Bolt, 4x7"	2	613697
15		Screw, 10-32 x 1/4" Phil Truss HD, SS	4	910012
16		Washer, Lock, 3/8"	4	910015
17		Washer, Flat, #6	2	910025
18		Washer, Lock, #6	2	910026
19		Screw, 8-32 x 3/8" Phil Truss HD, SS	2	910047
20		Screw, 8-32 x 1/4" Phil Truss HD, SS	8	910093
21		Screw, 6-32 x 3/8" Phil Truss HD, Zinc	2	910150
22		Screw, 4-40 x 1/4" Phil Flat HD, Zinc	2	910157

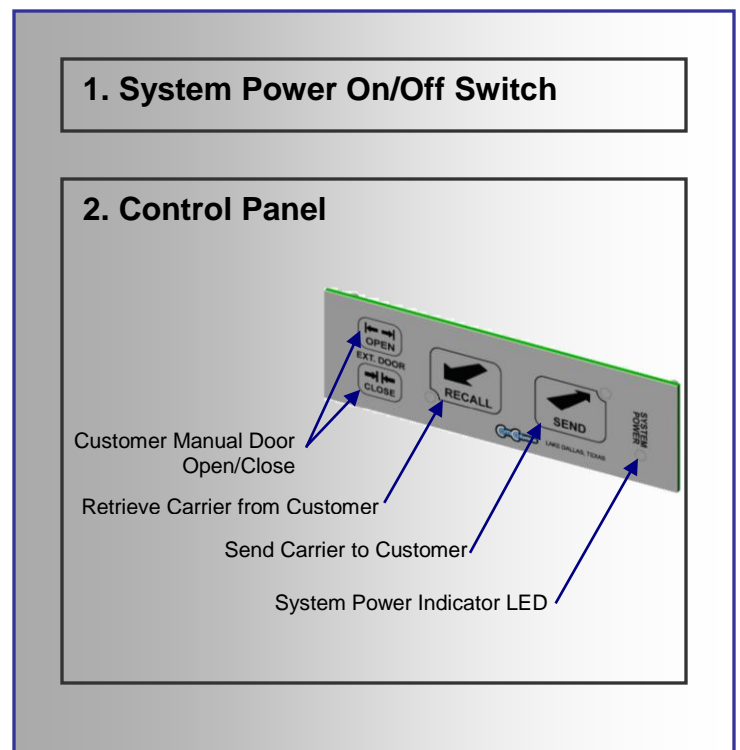
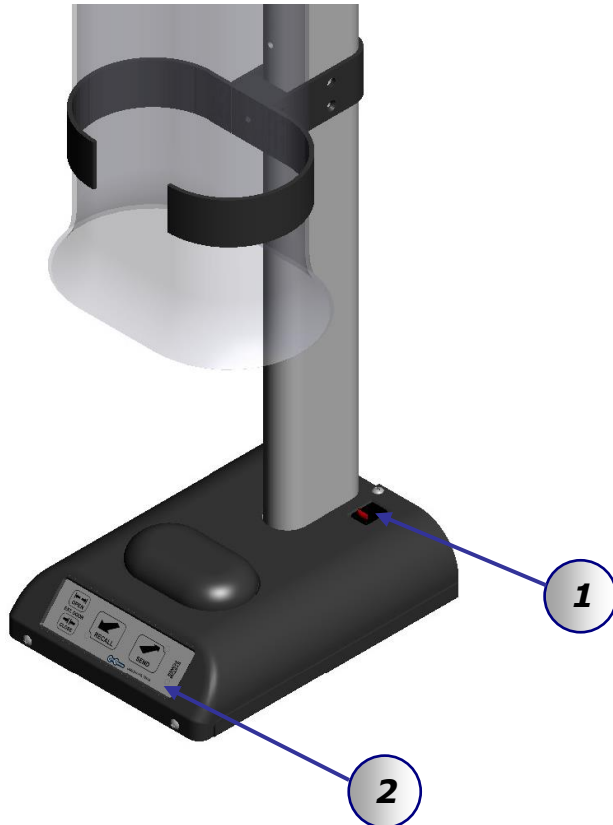
# ***Single-Sided Teller Chute***

**Model: *STC-4700-200863***



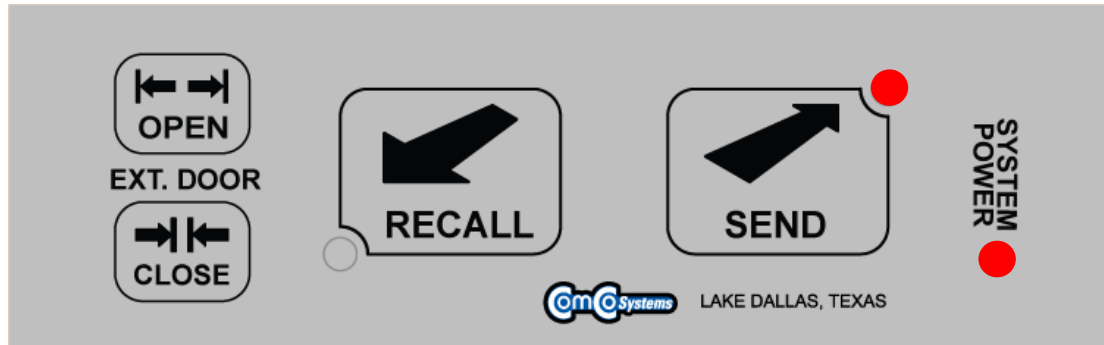
## Single-Sided Teller Chute (STC4700) (P/N: 200863)

The single-sided teller chute utilizes an open-door design. Insert the carrier in the open tube and press Send. Carrier dispatches to the customer unit.



### Single-Sided Teller Chute (P/N: 200863) Switch Operating Instructions

Fig. 1.0

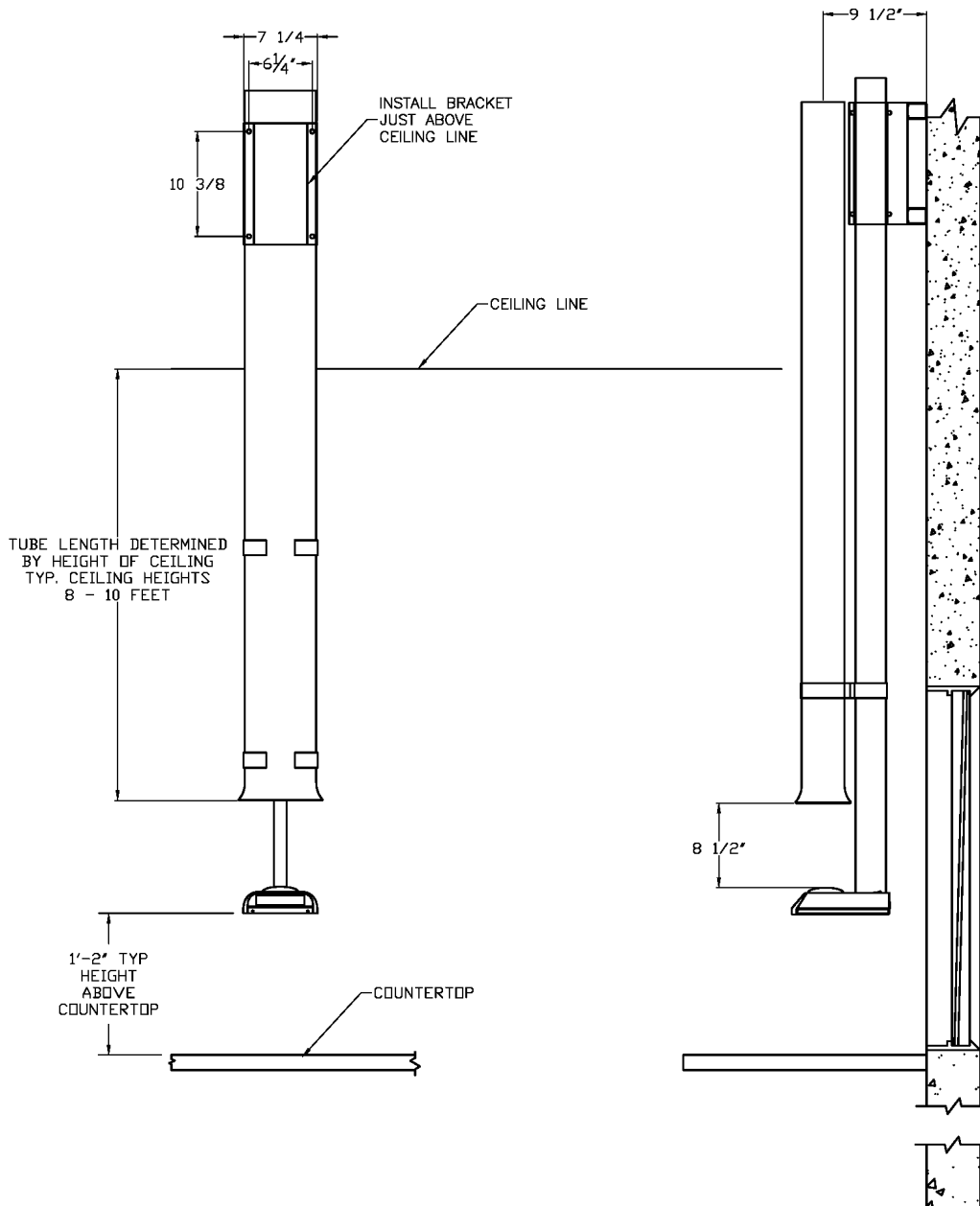


- ON/OFF** Power cycles the complete system (Inside Unit, Outside Unit & Blowers). Power ON the system power light will be present and opens the customer unit door. Power OFF complete system power down and closes the customer unit door. If installed it will power down the Customer Video Module (CVM).
- DOOR OPEN** Opens the customer unit door.
- DOOR CLOSE** Closes the customer unit door.
- SEND** Sends a carrier to the customer unit.
- RECALL** Recalls a carrier from the customer unit; – (the customer unit door will close when in the Send & Recall mode).

## Single-Sided Teller Chute (P/N: 200863)

### Dimensional & Electrical Specifications

Item	Measurements	Value
Unit (TU-101-200863)	Nominal Voltage	24 VDC
	Current (max)	1 amp

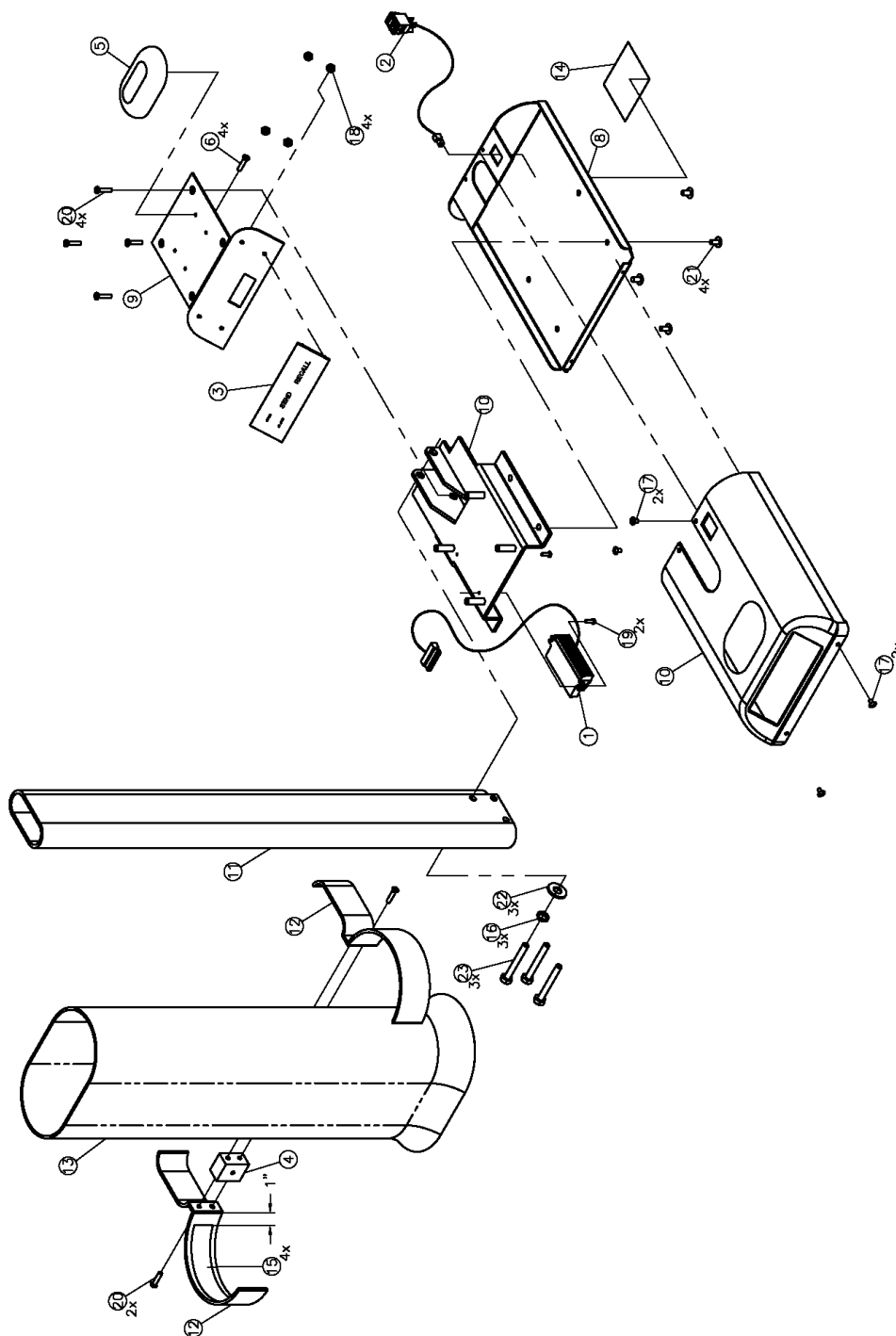


Installation of this unit must be done with only the assemblies supplied in STC2000 field service installation kit (P/N: 200745). See Appendix **B**.



## Single-Sided Teller Chute (P/N: 200863)

Parts Breakaway:



## Single-Sided Teller Chute (P/N: 200863)

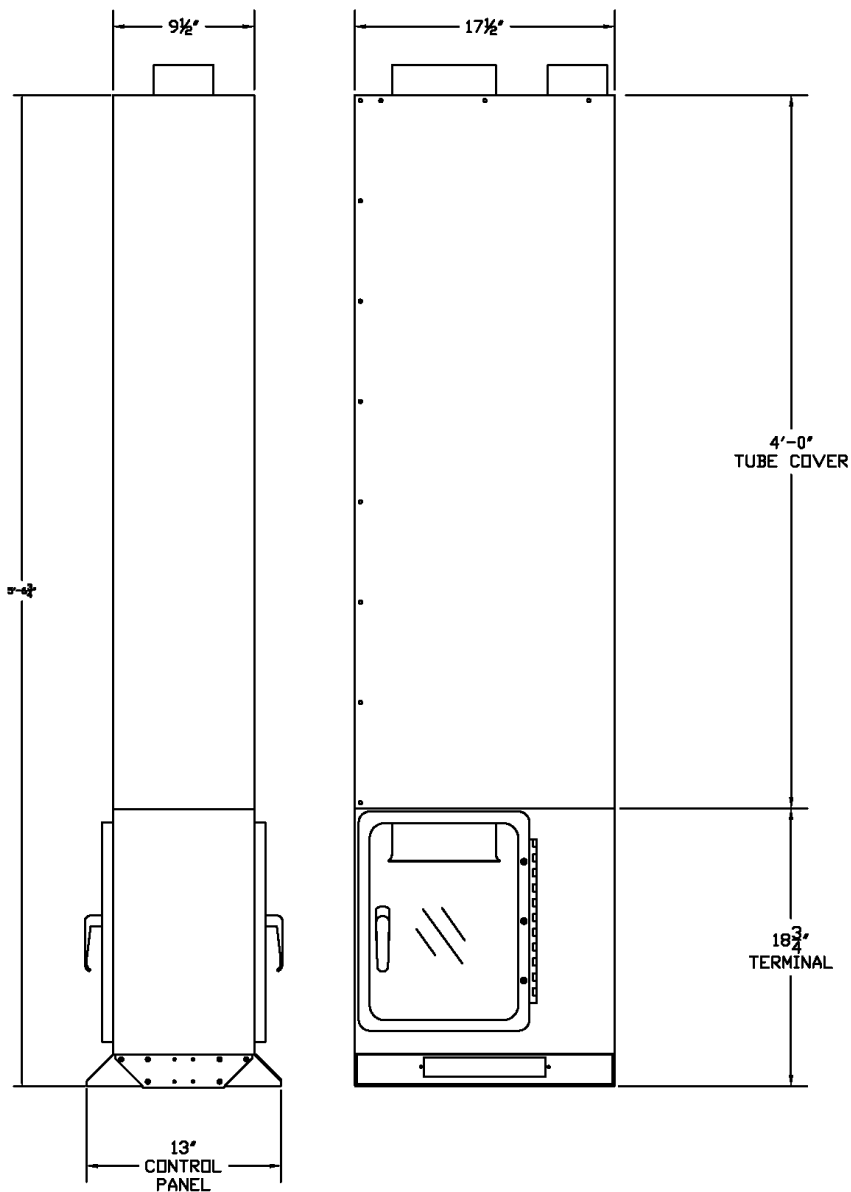
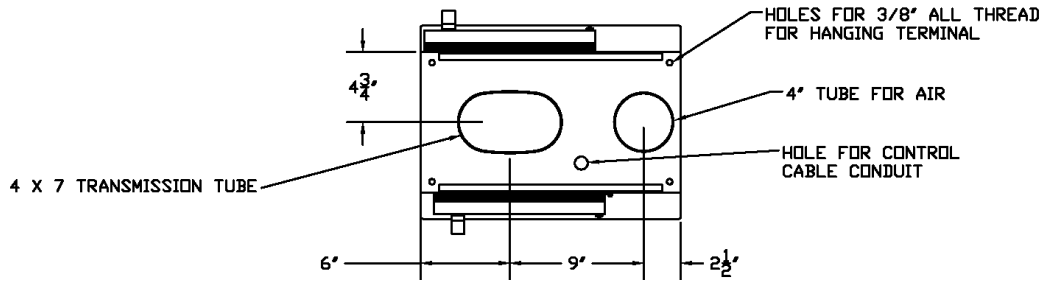
### Parts Descriptions:

	M/F	Description	Qty	P/N
23	M	SCREW, 1/4-20 x 2, HEX HEAD BOLT	3	910328
22	M	WASHER, FLAT 1/4 x 20	3	910075
21	M	SCREW, 10-32 x 3/8, PHIL TH, SS	4	910073
20	M	SCREW, 8-32 x 3/4, PHIL FL HD, ZINC	6	910062
19	M	SCREW, 4-40 x 3/8, PHIL PAN HD, ZINC	2	910031
18	M	NUT, 6-32, HEX	4	910030
17	M	SCREW, 6-32 x 1/4, PHIL TH, STAINLESS	4	910024
16	M	WASHER, LOCK, 1/4 x 20	3	910013
15	M	LINER, ADHESIVE, E-GRIPS, CLEAR TUBE CLAMP	1	700182
14	M	LABEL, SERIAL NUMBER, TSC2700	1	700132
13	M	TUBING, 4 x 7", CLEAR (BUSADA)	1	401053
12	M	RETAINER, TUBE, STC2000	2	401003
11	M	CONDUIT, SUPPORT, SINGLE SIDED TELLER CHUTE	1	400998
10	M	BRACKET, SINGLE SIDED TELLER CHUTE	1	400997
9	M	RETAINER, PAD, STC2700	1	401138
8	M	BASE, SINGLE SIDED TELLER CHUTE	1	400992
7	M	COVER, SINGLE SIDED CHUTE, 522	1	400972
6	M	SCREW, 8-32 x 3/8, PHIL PAN HD, ZINC	4	910XXX
5	M	LANDING, PAD, STC2700	1	401082
4	M	BLOCK, CLAMP, STC2000 & STC4000 SERIES	1	401065
3	M	ASSEMBLY, PCB, PUSH BUTTON, STC2000	1	200690
2	M	ASSEMBLY, CABLE, POWER SWITCH	1	200391
1	M	ASSEMBLY, CABLE, CONTROL PANEL, 521	1	200190

# ***Dual Sided Manual Teller Unit***

**Model: TU-900-200747**







# ***Customer Unit***

**Model: CU-922-200875**

## Customer Unit (P/N: 200875)

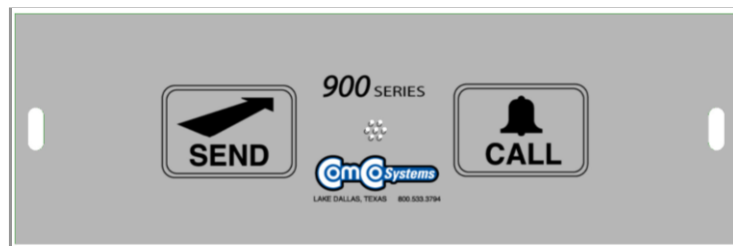
### Machine & Switch Operating Instructions

**SEND** Sends carrier to Teller Unit.  
(NOTE: DO NOT INSERT LOOSE ITEMS DIRECTLY INTO UNIT)

**CALL** Generates an audible tune at the Teller Center when depressed.

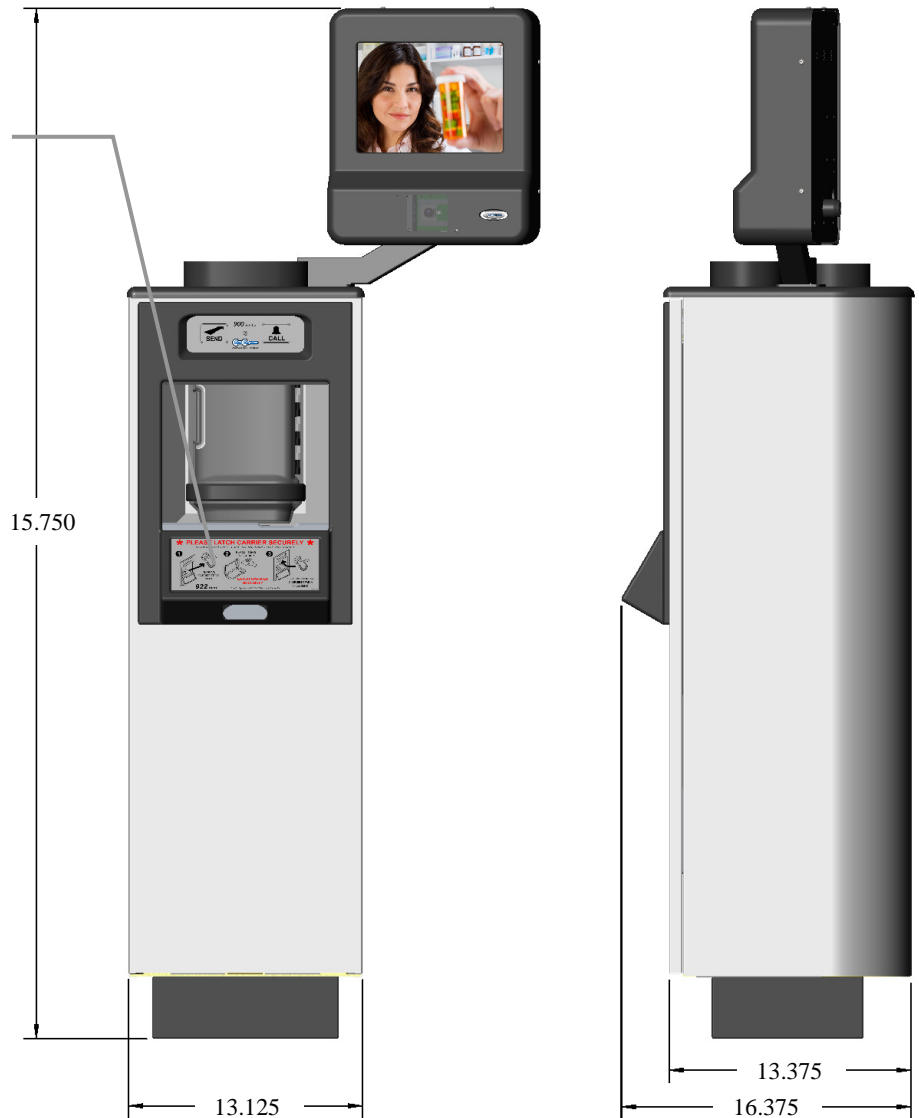
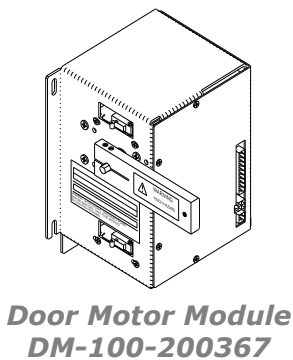
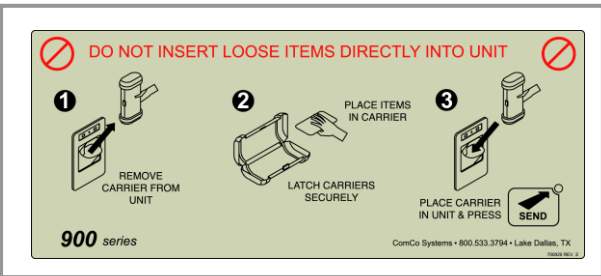


*Upper Switch Panel*



### Customer Unit (P/N: 200875) *Dimensional & Electrical Specifications*

Item	Measurements	Value
Customer Video Module (CV-200-200903)	Nominal Voltage Current (max)	12 VDC 1.2 amps
Door Motor Module (DM-100-200367)	Nominal Voltage Current (max)	120 VAC, 60Hz 1 amp

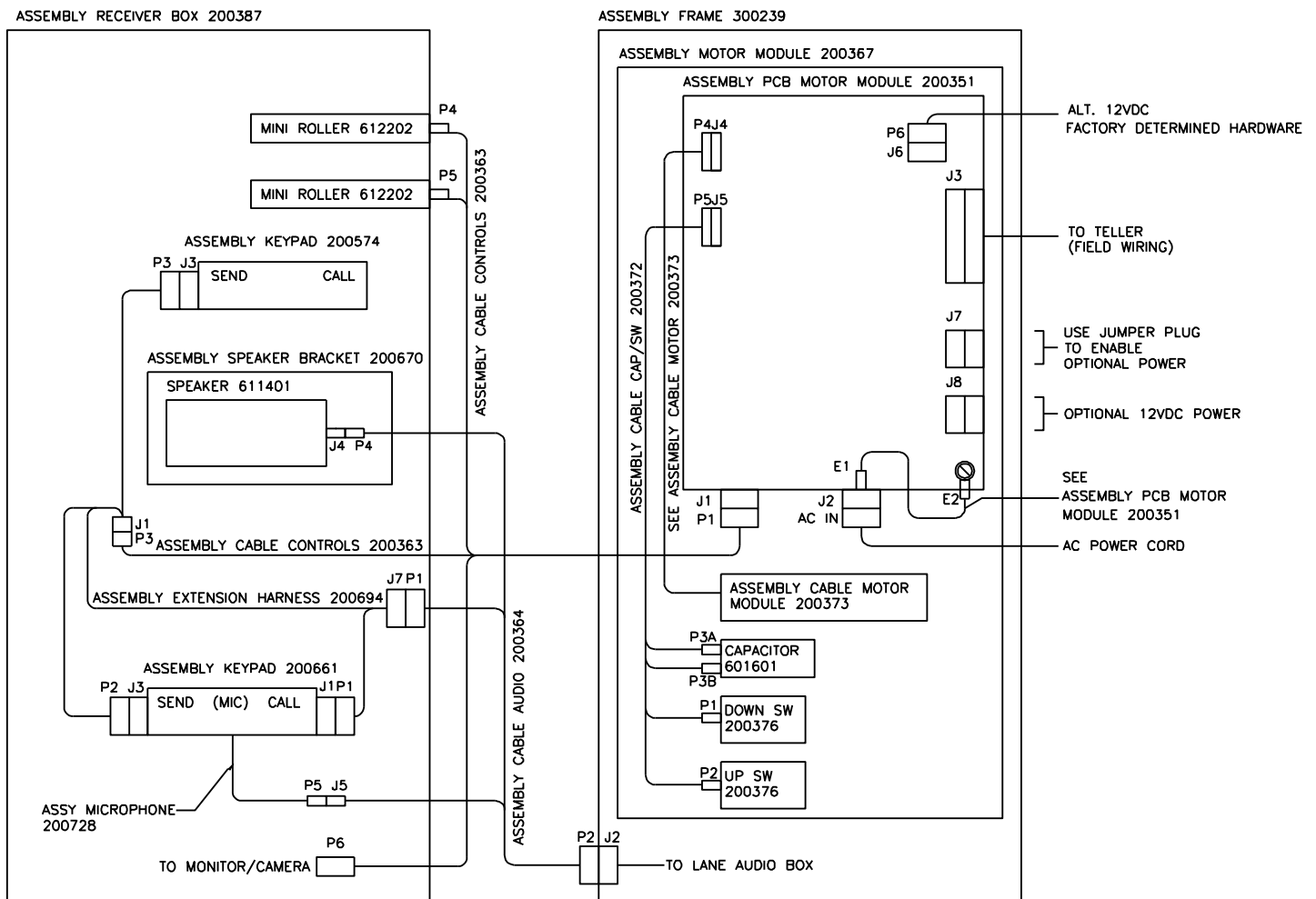


## Customer Unit (P/N: 200875)

### Main Wiring Diagram

**WARNING: SHOCK HAZARD**

Power Down the system before initiating procedures described in this section. Severe personal injury could result if power remains on during these procedures.

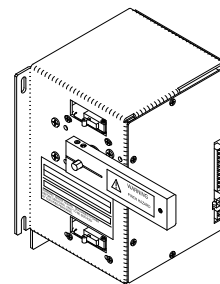


FINAL ASSEMBLY CABLE DRAWING



### Customer Unit Door Motor Module (P/N: 200367) Line Voltage Installation

Installation of this unit must be done with only the assemblies supplied in 522 series field service wiring kit (P/N: 200438). See Appendix B.



#### **WARNING: SHOCK HAZARD**

Disconnect AC Power before Servicing Unit!

\*AC Service Disconnect for Unit is located at the readily accessible branch circuit protection\* All Line Power must be in compliance with the NEC 2005  
Only by Authorized/Qualified Personnel.



#### **Class 2 Field Wire**

White  
Grey  
Purple  
Blue  
Green  
Yellow  
Orange  
Red  
Brown  
Black



Wire Colors

#### **SHOCK HAZARD**

Disconnect AC Power before Servicing Unit

\*AC Service Disconnect for Unit is located at the readily accessible branch circuit protection \*

#### **SHOCK HAZARD**

Disconnect AC Power before Servicing Unit

\*AC Service Disconnect for Unit is located at the readily accessible branch circuit protection \*

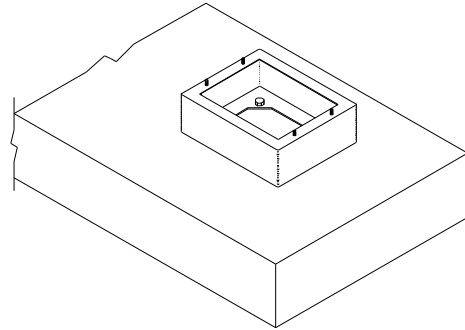
#### **Plug Rating 15A 250V Field Wiring**



L - Black  
GND - Green  
N - White

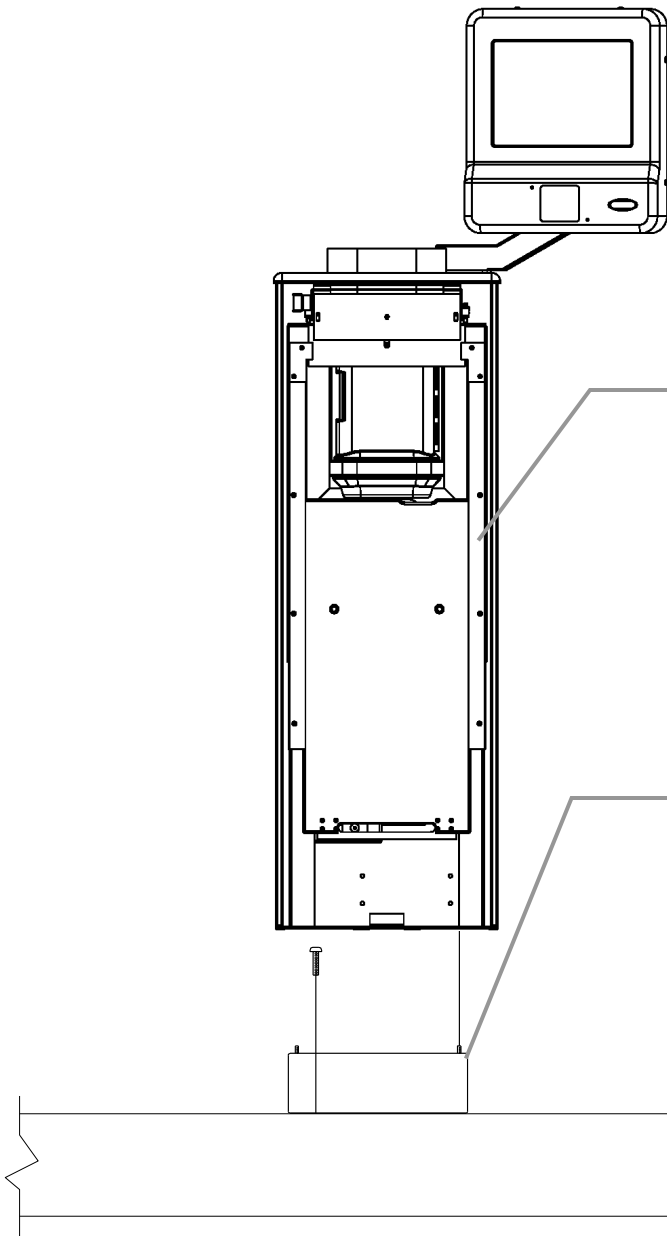
**Serviceable FUSE Location  
Rating: 1A 250VAC Fuse  
UL Listed Only**

## Customer Unit (P/N: 200875) Mounting & Access



**Base ISO View**

Completed installation of base on a typical island



Remove front panel for  
installation or service access.

Fasten Mounting Bracket to Island. Using  
minimum 1/4" hardware position leading edge  
of bracket "X" in. from edge of island and  
shim level if needed.  
("X" Distance see cut sheets for job site)

**Customer Unit** (P/N: 200875)

Parts Breakaway:

*Pending*

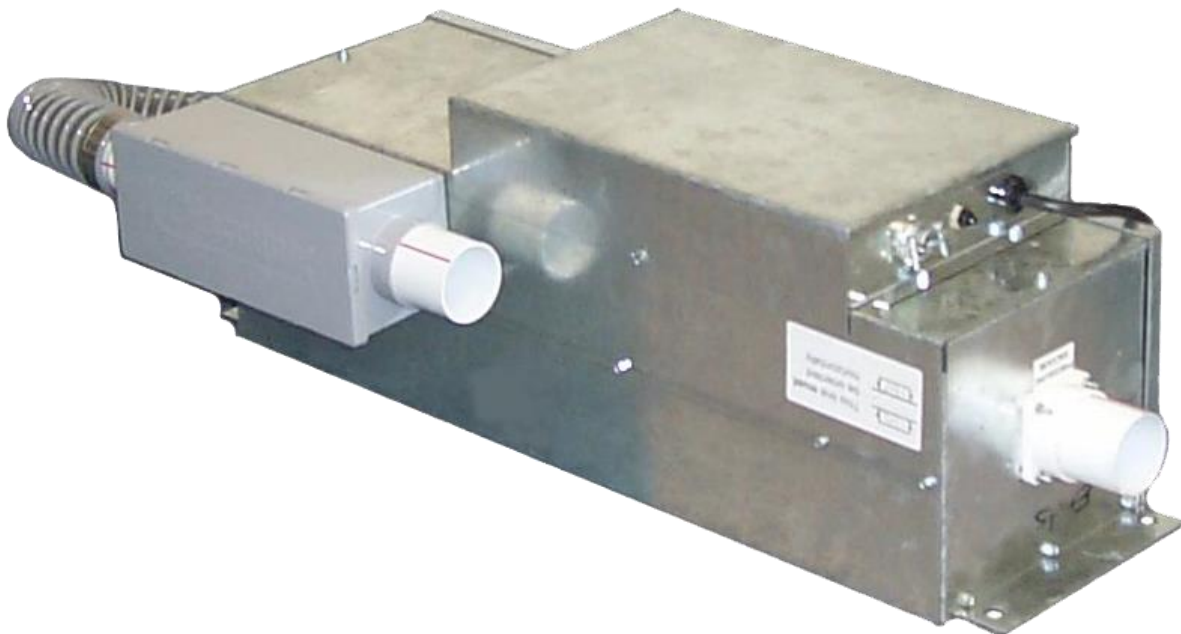
**Customer Unit** (P/N: 200875)**Parts Descriptions:**

	<i>M/F</i>	<i>Description</i>	<i>Qty</i>	<i>P/N</i>
--	------------	--------------------	------------	------------

***Pending***

# ***Single Pack Blower***

**Model: *BM-200-200217***



## Single Pack Blower Module (P/N: 200217)

### Line Voltage Installation

For Installation of this unit refer to construction site plans or cut sheet for locating the unit. If the blower is installed in a closed canopy, the exhaust port must be vented to outside air to prevent overheating. Refer to field service wiring kit (P/N: 200438) for all control and 115 VAC plugs.

### **WARNING: SHOCK HAZARD**

Disconnect AC Power before Servicing Unit Only to be serviced by Qualified Personnel

**\*AC Service Disconnect for Unit is located at the Main Junction Breaker Box\***

### **NOTE:**

*There must be a 115VAC @ 20A dedicated circuit within 3.0 ft of the unit. All Line Power must be done in compliance with the NEC (National Electrical Code) by authorized/qualified personnel.*

**2-115 VAC 10A  
Resettable Fuse**

### **SHOCK HAZARD**

Disconnect AC Power before Servicing Unit

**\*AC Service Disconnect for Unit is  
located at the Main Junction Breaker Box\***

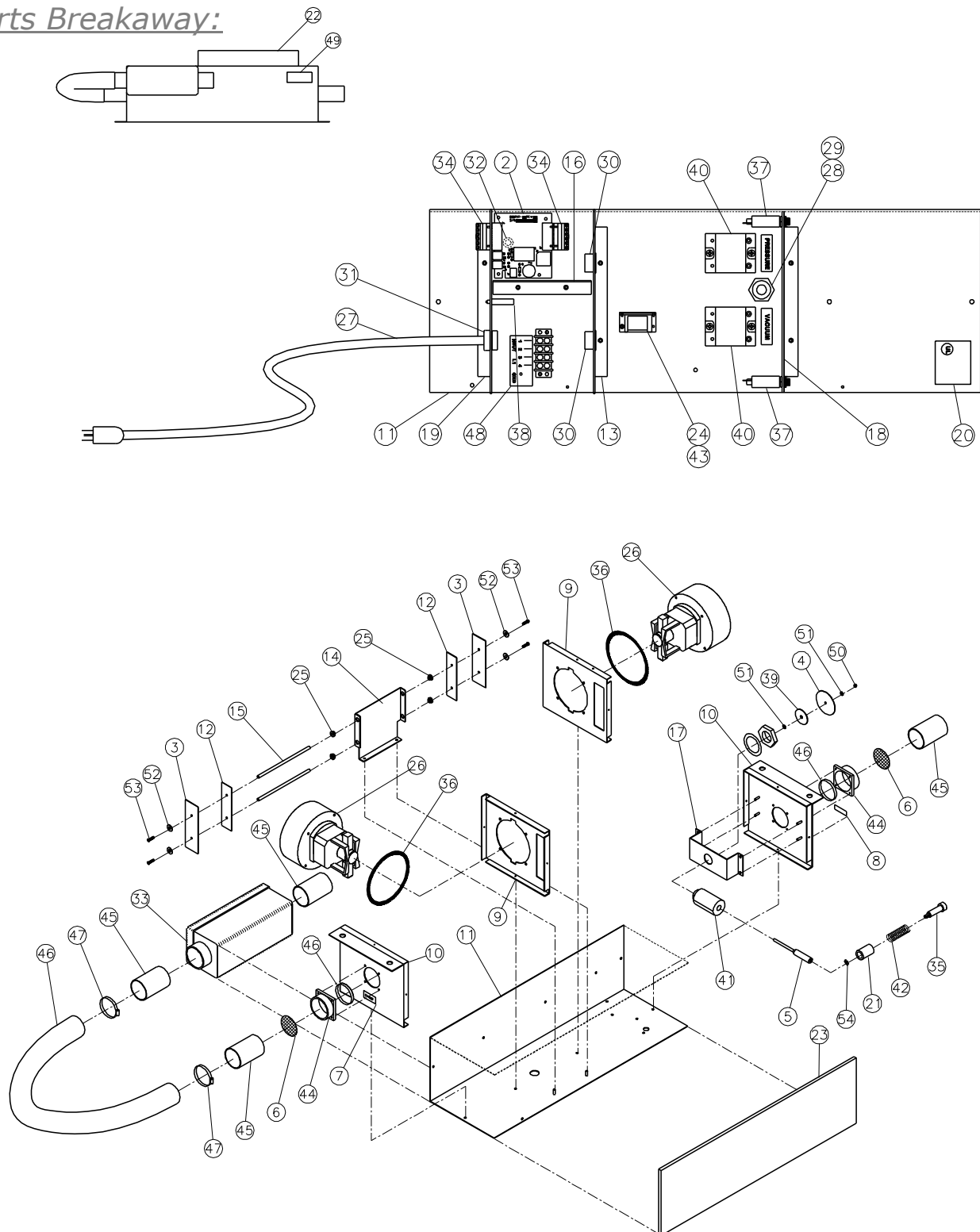
**1-115 VAC 0.5 A Resettable Fuse**

**Class 2  
Field Wire**

Use ¼" minimum hardware to  
mount unit in place. For  
mounting location see cut  
sheets for job site.

### Single Pack Blower Module (P/N: 200217)

#### Parts Breakaway:



## Single Pack Blower Module (P/N: 200217)

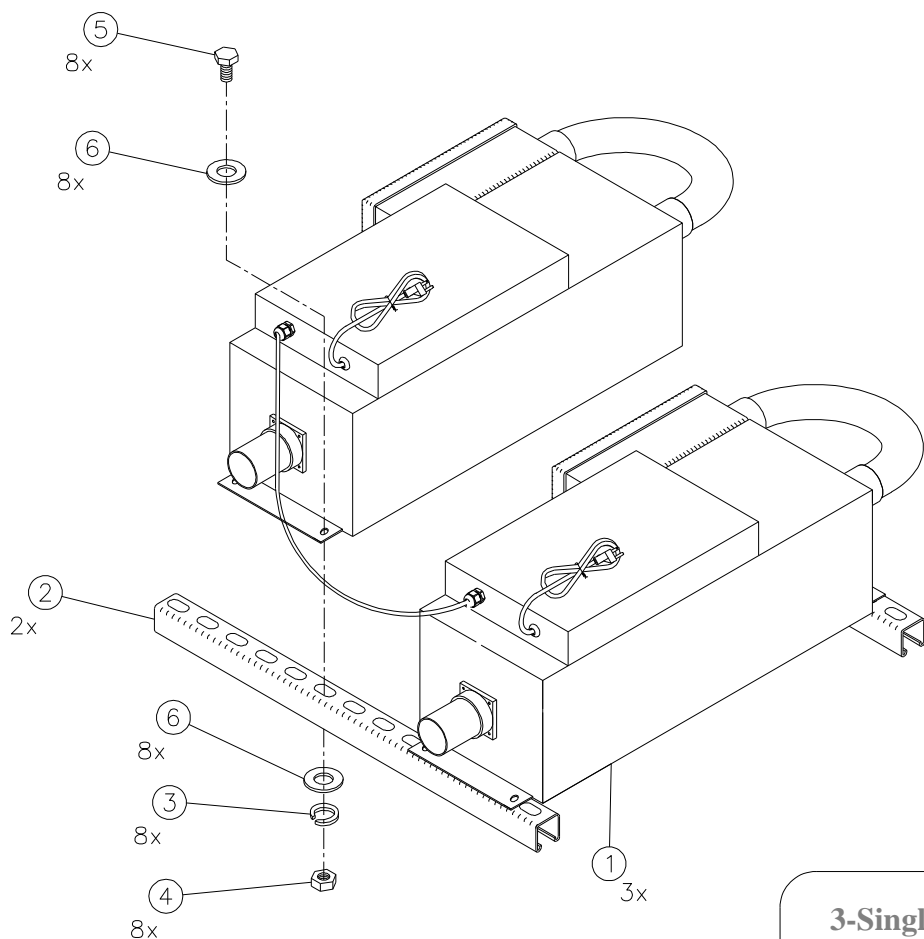
### Parts Descriptions:

	<i>M</i>	<i>Description</i>	<i>Qty</i>	<i>P/N</i>
54	M	WASHER, STAR, #10	1	910212
53	M	SCREW, 8-32 x 3/8", PHIL PH, ZINC	4	910055
52	M	WASHER, FLAT, #6	2	910025
51	M	WASHER, FLAT, #8	4	910004
50	M	NUT, LOCK, 6-32	1	910003
49	M	LABEL, BLOWER OREINTATION	2	700031
48	M	LABEL, AC POWER, TERMINAL STRIP	1	700030
47	M	HOSE CLAMP, 2"	2	613811
46	M	TUBE, FLEX, 2" ID	12"	603801
45	M	TUBE, PVC, 2", THINWALL (4 PCS @ 2 1/2" / 2 PCS @ 1/4")	10.5"	613204
44	M	COUPLING, FLANGE, 2" PVC	2	613203
43	M	TRANSFORMER, 120/24 VAC, FM	1	612803
42	M	SPRING, COMP, LC, 022D-11	1	611608
41	M	SOLENIOD, PUSH, I, 24V	1	611204
40	M	RELAY, SS, 25A, MOTOR RATED	2	609819
39	M	WASHER, FENDER, 1/4" ID x 1-1/2" OD	1	605206
38	M	CIRCUIT BREAKER, 0.5 AMP	1	604414
37	M	CIRCUIT BREAKER, THERMAL, 10A	2	604412
36	M	SEAL TAPE, 1/8" x 3/8" W/PSA	10'	604202
35	M	BOLT, STRIPPER, 1/4" x 2"	1	604040
34	M	PLUG, PHOENIX, 6 POSITION	2	603084
33	M	MUFFLER, 5x5, PVC	1	602202
32	M	BUSHING, CABLE, 1/2" x 1/4" ID	1	601419
31	M	STRAIN RELIEF, 7/8" 12 GA	2	601415
30	M	BUSHING, UNIVERSAL, 7/8"	2	601405
29	M	LOCKNUT, 1/2" CABLE STR	1	601402
28	M	CORD GRIP, NPT1/2PA	1	601401
27	M	CABLE, 3X8' POWER CORD	1	601212
26	M	MOTOR, BLOWER, 124CFM	2	601003
25	M	BUSHING, NYLON	4	600807
24	M	BRACKET, MOUNT, TRANSFORMER, UL BLOWER	1	400874
23	M	COVER, UL BLOWER	1	400453
22	M	COVER, CONTROLS, UL BLOWER	1	400450
21	M	SPACER, SPRING, SUPPORT	1	400285
20	M	LABEL, UL, 71CF	1	400249
19	M	PCB ENDPLATE	1	400241-18
18	M	CONTROLS ENDPLATE	1	400241-15
17	M	SOLENIOD STANDOFF	1	400241-11
16	M	DIVIDER	1	400241-10
15	M	BYPASS VALVE ROD	2	400241-9
14	M	BYPASS VALVE GUIDE	1	400241-7
13	M	BACK PLATE	1	400241-6
12	M	VALVE STIFFENER	2	400241-5
11	M	HOUSING	1	400241-4
10	M	END PLATE	2	400241-3
9	M	MOTOR PLATE	2	400241-1
8	M	LABEL, BLOWER, PRESSURE/VAC	1	400176-2
7	M	LABEL, BLOWER, EXHAUST	1	400176-1
6	M	HONEYCOMB, 2" DIA	2	400169-1
5	M	MOD, PLUNGER, SOLENIOD	1	400121
4	M	AIR DISK, 521 VALVE	1	400120
3	M	MEMBRANE, BYPASS VALVE	2	400109
2	M	ASSEMBLY, PCB, INTERFACE, SOLENIOD, UL BLOWER	1	200717
1	M	HARNESS, UL BLOWER	1	200219

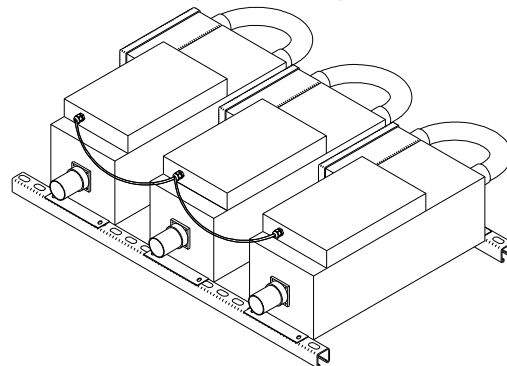


### 2-Single Pack Blower Module Assembly (P/N: 200281)

#### Parts Breakaway:



#### 3-Single Pack Blower Module Assembly (P/N: 200562)



**Dual Pack Blower Module (P/N: 200281)**Parts Descriptions:

	<i>M/F</i>	<i>Description</i>	<i>Qty</i>	<i>P/N</i>
1	MAT	Assembly, Blower, Bypass	2	200217
2	MAT	Unistrut (2 pcs cut 40")	56"	605030
3	MAT	Washer, Lock, 3/8	8	910015
4	MAT	Nut, 3/8-16	8	910021
5	MAT	Bolt, 3/8-16 x 1", Hex Head	8	910027
6	MAT	Washer, Flat, 3/8	16	910042

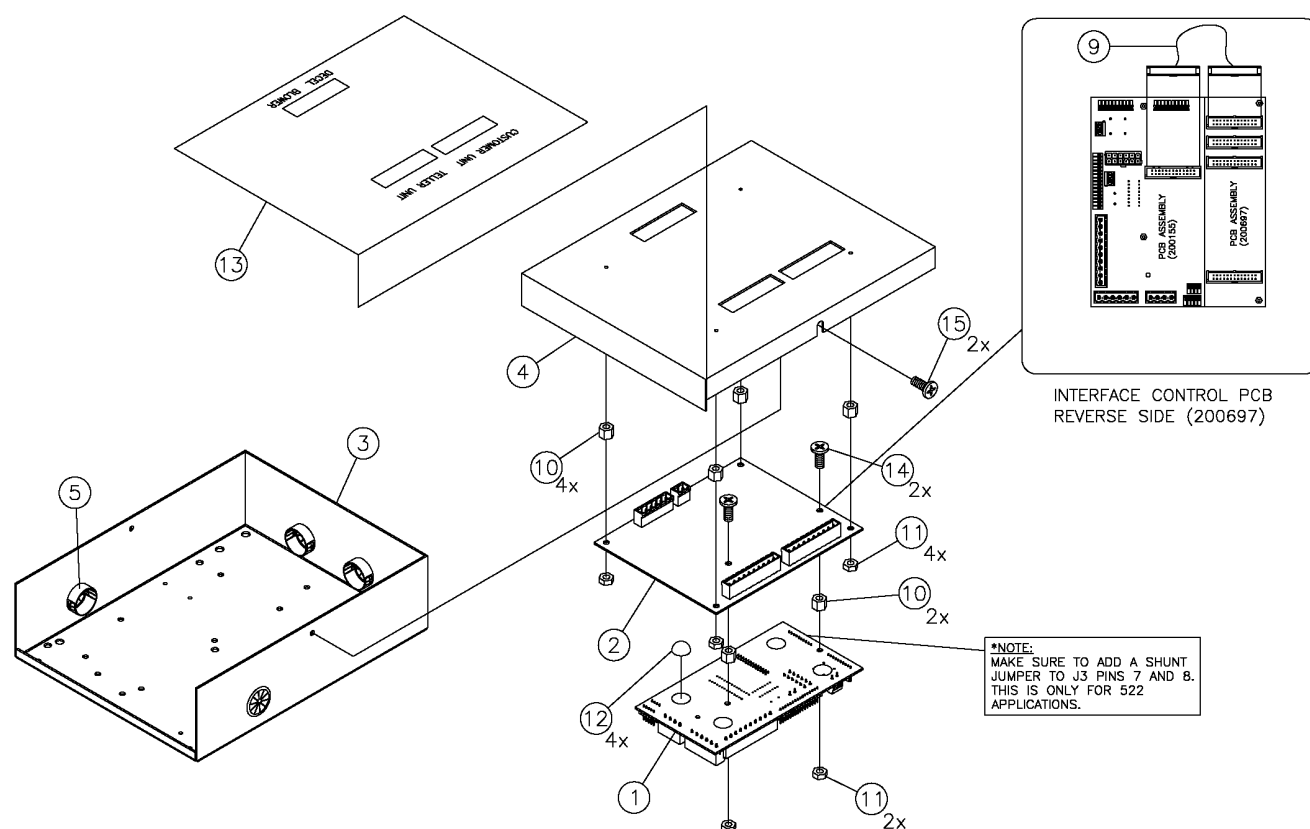
# **522 System Controller**

**Model: SC-521-200703**



## System Controller (P/N: 200703)

### Parts Breakaway:



	M/F	Description	Qty	P/N
1	MAT	Assembly, PCB, Control, 521 Rev. K	1	200155
2	MAT	Assembly, PCB, Interface, Control, 522	1	200697
3	MAT	Box, Control, Low Voltage	1	400033
4	MAT	Top, Box, Control, Low Voltage	1	400490
5	MAT	Bushing, Universal, 7/8	4	601405
6	MAT	Plug, 6 Position (Phoenix) <i>included in field wiring kit</i>	1	603084
7	MAT	Plug, 10 Position (Phoenix) <i>included in field wiring kit</i>	2	603125
8	MAT	Plug 2 Position (Phoenix) <i>included in field wiring kit</i>	1	603127
9	MAT	Cable, Ribbon, Flat, IDE	1	603836
10	MAT	Spacer, Hex, PLA-4-40x 1/4	6	604021
11	MAT	Nut, Hex, PLA-4-40x .1	6	604031
12	MAT	Pad, Foot, Rubber	4	605220
13	MAT	Graphic, Overlay, Low Voltage Box, 522	1	700117
14	MAT	Screw, #4-40 x 1/2" PPH, Zinc	4	910067
15	MAT	Screw, 10-32 x 1/2" Hex Washer Head, Thread Cutter	2	910078

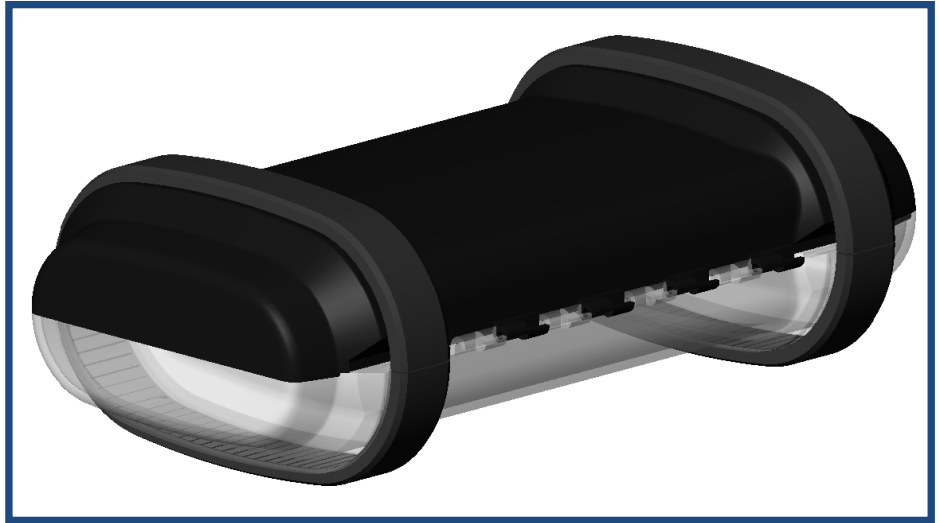
### 4 x 7" Carrier (P/N: 400215)

Carriers must be closed fully before they are inserted into either the teller unit or the customer unit. Carriers that are not fully closed may fail to leave the sending unit, may become lodged within the transmission tubing, or possibly lose their contents during transmission.

If coins are to be sent, it is recommended that they be rolled and placed in a pouch or bag. Loads that can shift during transmission may cause malfunction or damage to the carrier or system.

Carriers are not to exceed a gross weight of **4 lbs** when used in a Pharmacy application.

The contents of the carrier must be fully within the carrier and not caught between edges. Multiple transmissions should be used if a load is too large to fit within the single carrier.



***BLANK PAGE***

## Theory of Operation

### Powering the System

The rocker switch at the back of the teller chute controls power to the system. The red LED on the switch panel indicates “power on.”

***NOTE:** The power switch does **not** switch off 120VAC service to any component. It is only used to deactivate the system. Some components may remain energized and/or active when the system is “off.”*

### Power ON

1. Teller switches power on
2. Power indicator illuminates
3. Customer Unit door opens
4. *CVM Systems only:* Camera and monitor in CVM are powered on
5. System is now in ready state

### Power OFF

1. Teller switches power off
2. Power indicator extinguishes
3. Customer Unit door closes
4. *Motorized Teller Units only:* Teller Unit door closes (I.E. a motorized door 521 TU)
5. *CVM Systems only:* Camera and monitor in CVM are powered off
6. System is now off

***NOTE:** The power switch may be used to recover from unusual system conditions simply by switching it off and on – this will reset the system.*

### Send cycle

1. Teller inserts carrier into teller chute
2. Teller (closes teller unit door if used with 521 TU) presses SEND
3. Send cycle begins
4. Vacuum blower activates
5. Carrier is propelled from Teller Unit into transmission tubing, towards Customer Unit
6. Carrier passes Valve Bend over Customer Unit
7. Carrier decelerates due to pressure in front of carrier
8. Carrier arrives at Customer Unit, cycle timer times out
9. Vacuum blower deactivates
10. Customer Unit door opens
11. Send cycle ends; System is now in ready state

## Recall cycle

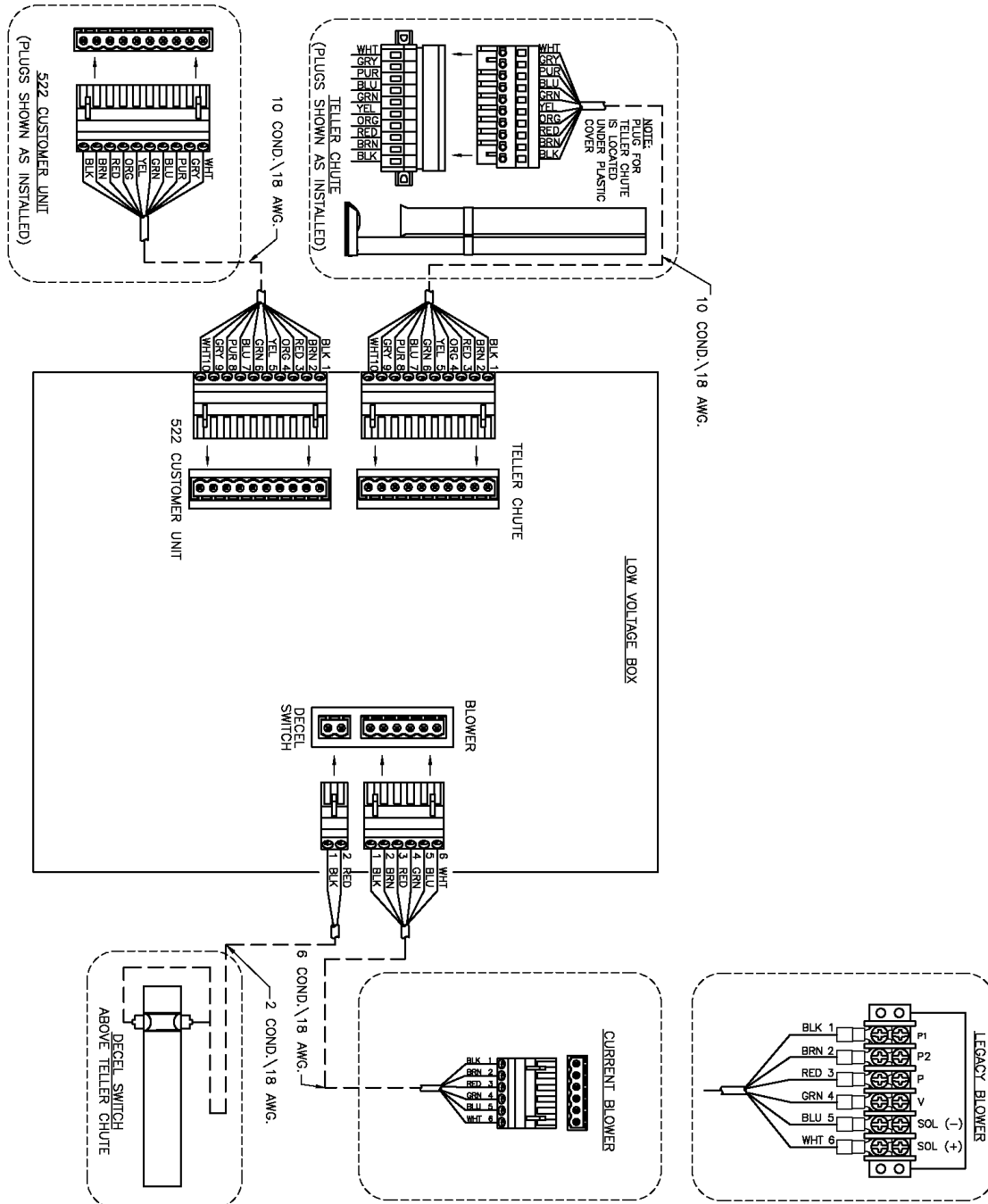
1. Customer inserts carrier into Customer unit
2. Customer presses SEND
3. Customer unit door closes (*Note: if the safety switch actuator at the top of the door is lifted when the door is closing, the door will reverse, and the cycle will be canceled*)
4. Recall cycle begins
5. Pressure blower activates
6. The carrier is dispatched to the teller chute
7. Carrier passes the Deceleration Switch above the teller chute
8. Pressure blower deactivates and Braking Solenoid activates
9. Carrier soft lands at teller chute
10. Recall cycle ends – system is now in ready state



### Installation Diagram 922 CU to STC4700

#### Control Field Wiring Diagram (P/N: 500330)

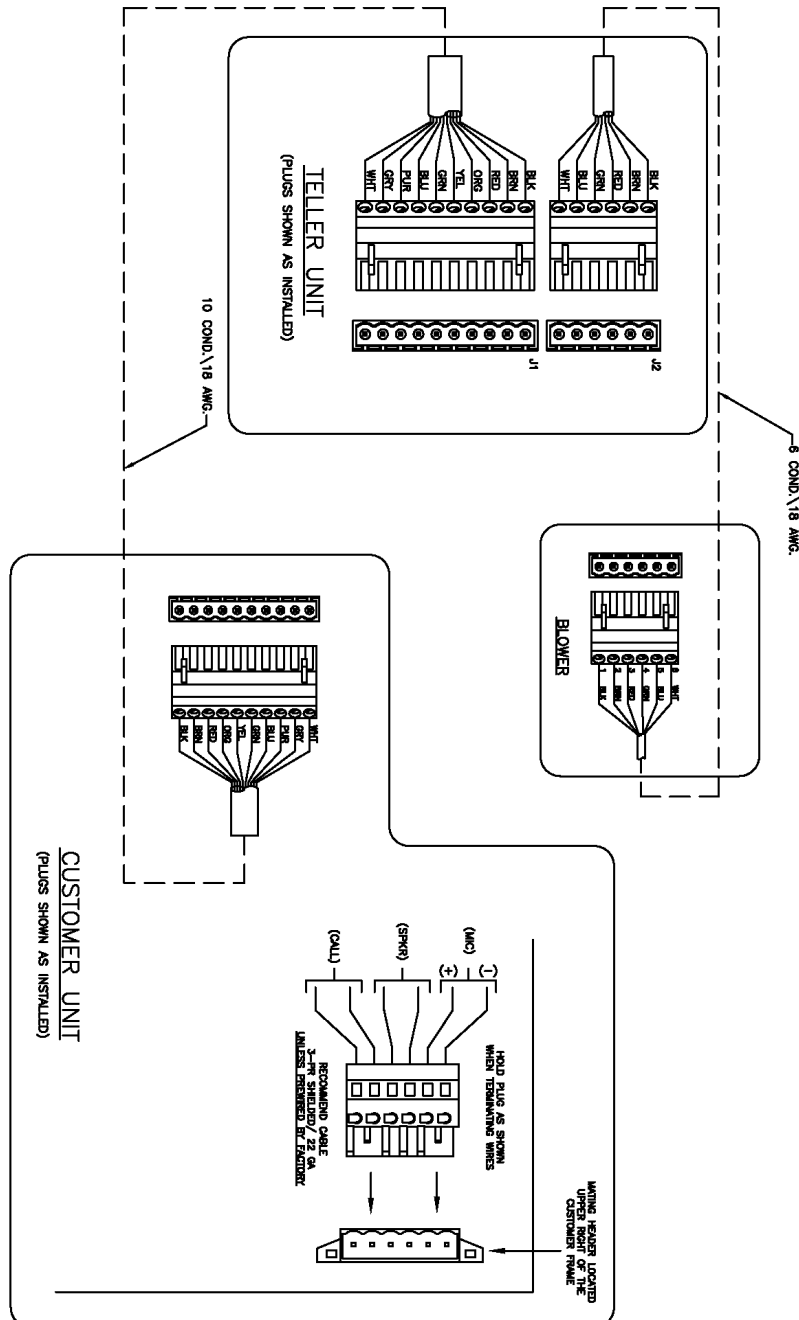
**NOTE:** All Class 2 interconnecting cabling must be done in compliance with the ARTICLE 800.33 (A) FPN No.2, exception No.2, of the NEC (National Electrical Code) by an authorized/qualified personnel.



## Installation Diagram 922 CU to Single & Dual Manual Teller Unit

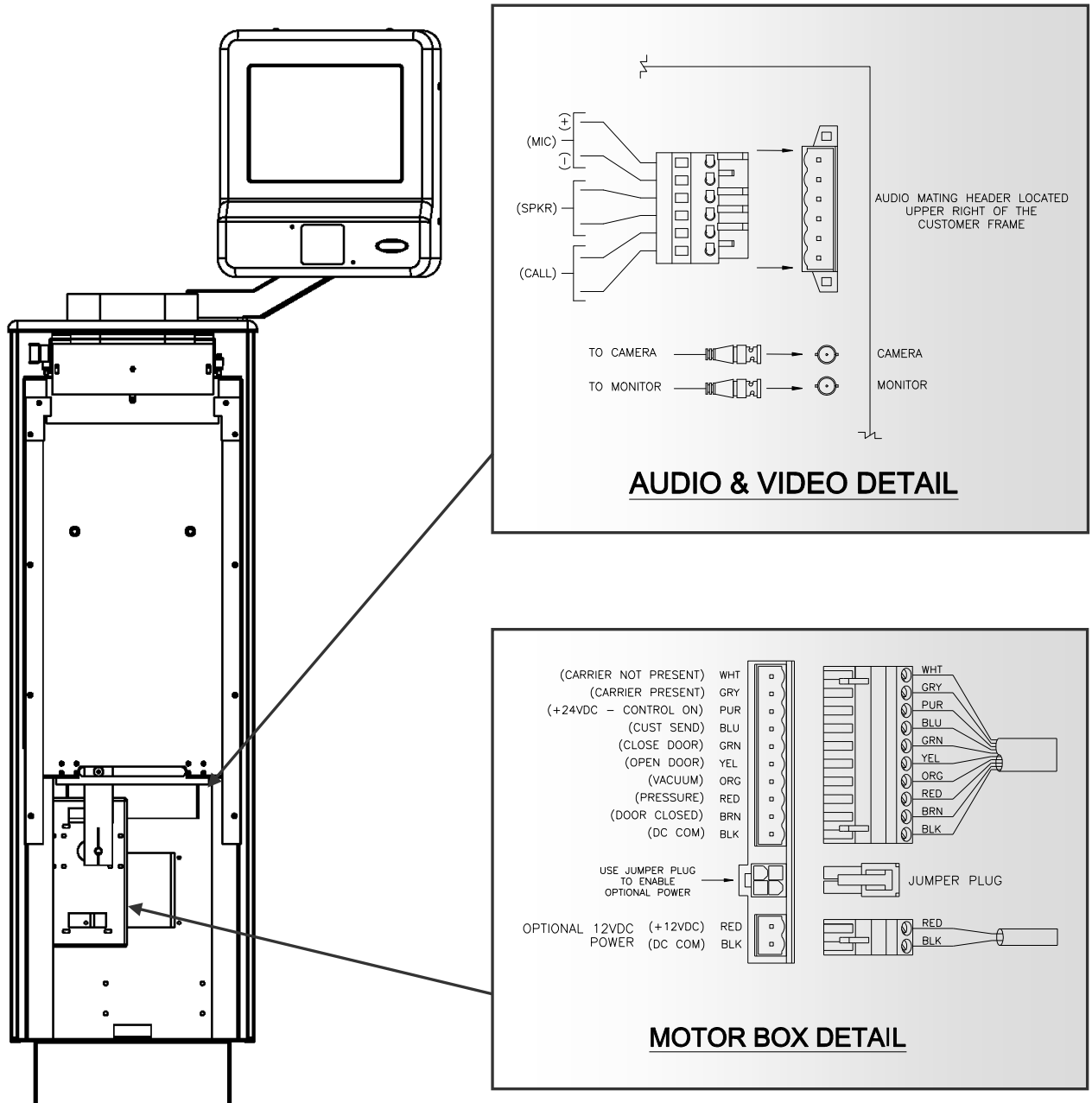
### Control Field Wiring Diagram (P/N: 500165)

**NOTE:** All Class 2 interconnecting cabling must be done in compliance with the ARTICLE 800.33 (A) FPN No.2, exception No.2, of the NEC (National Electrical Code) by an authorized/qualified personnel.



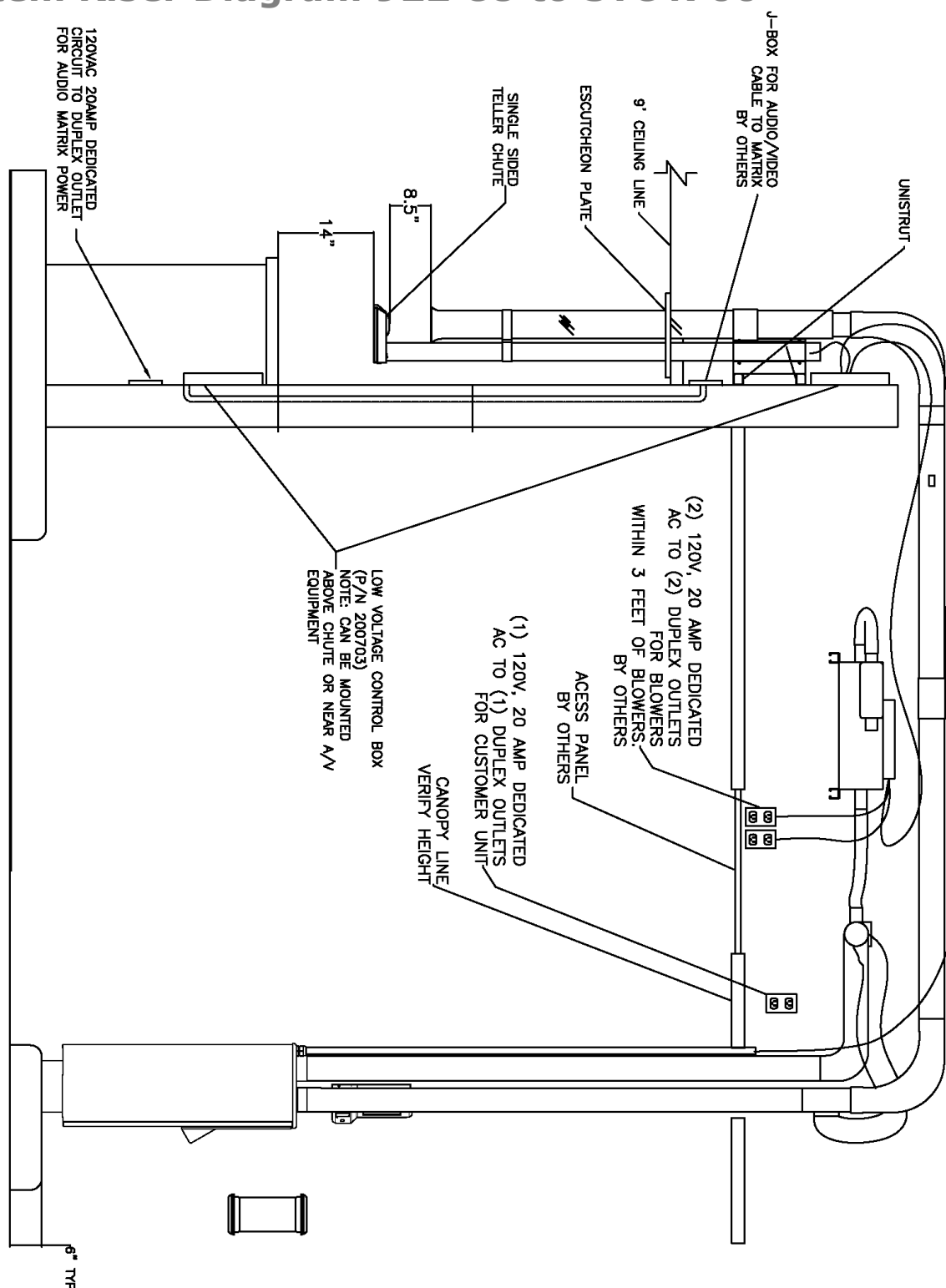
***BLANK PAGE***

**Control/Audio Field Wiring Diagram**

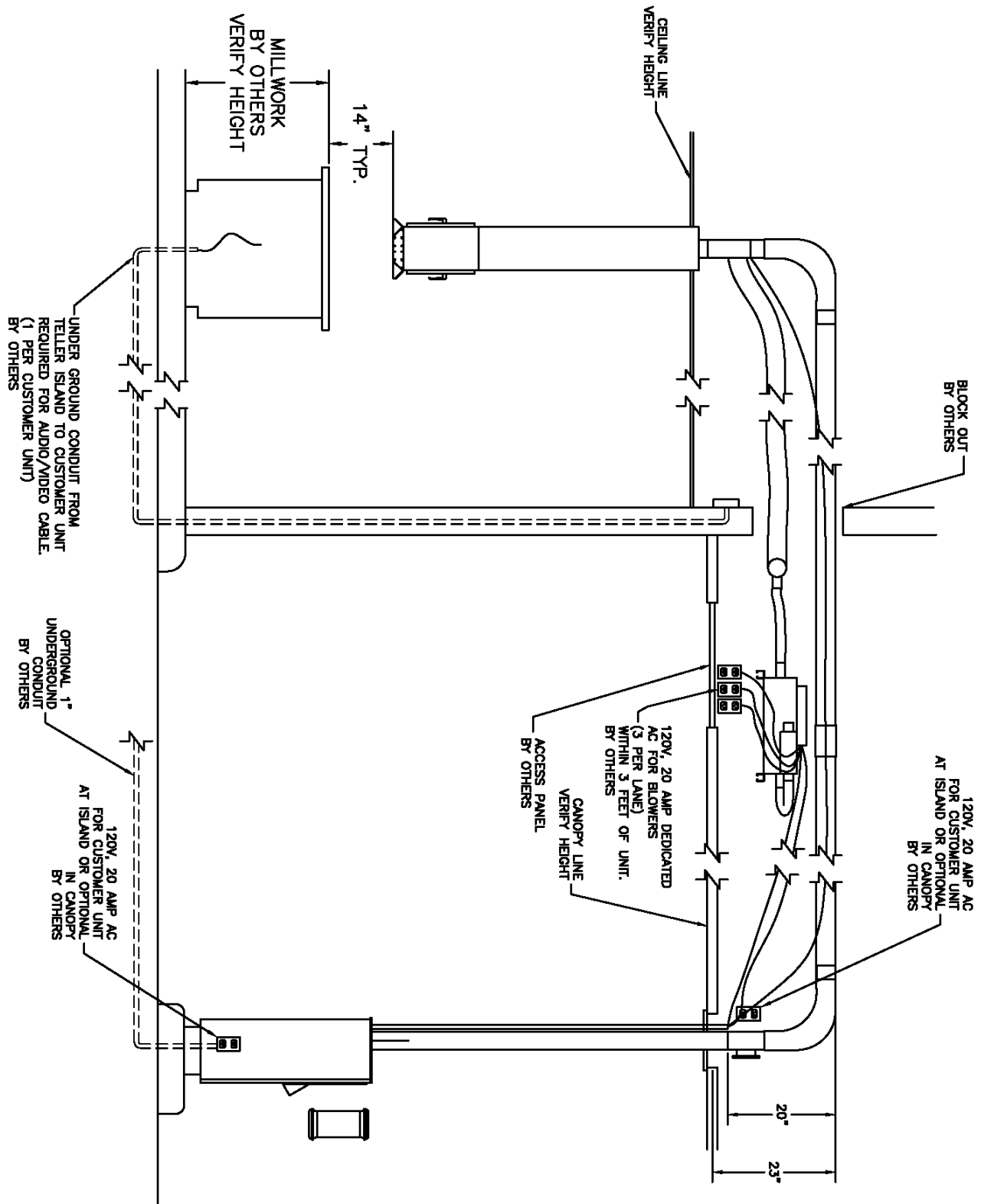


(Shown without front cover)

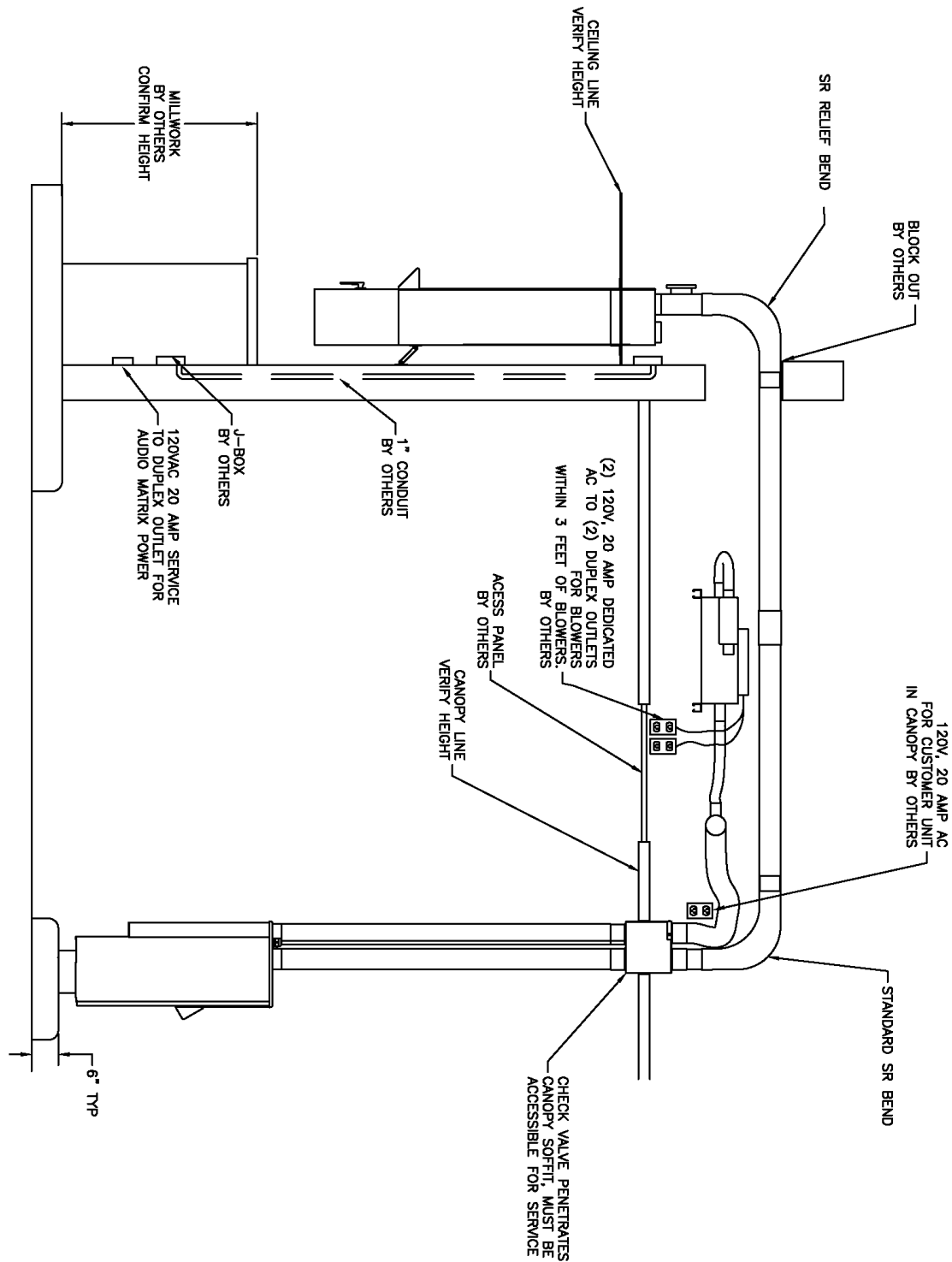
### System Riser Diagram 922 CU to STC4700



System Riser Diagram 922 CU to Dual Manual Teller Unit



### System Riser Diagram 922 CU to Single Manual Teller



### *Blower*

All blower packs are suitable for installation in restricted access locations at maximum operating ambient 40C deg/104F deg.

**Note:** If blower is installed in a closed canopy the exhaust port must be vented to outside air to prevent overheating.

### *Tubing*

All tubing *must* be sealed properly. *Seal all joints* – especially those at the teller and customer units.

All inside edges of tube joints *must be de-burred and ground to an angle* to prevent excessive wear on carriers.

### *Timer Adjustment*

Adjust timer (T1) for approximately 5 seconds greater than the time required for an empty carrier to be recalled from the customer unit to the teller unit (this should be 2-3 seconds after the carrier lands at the teller unit). See Appendix A for switch settings and other timing settings.

### *Customer Video Module (CVM) Power Switch*

The CVM power switch is located inside the Door Motor Control Module. Power switch (SW1) factory default setting “OFF” will cycle power to CVM with system power. Power switch (SW1) in the “ON” position allows CVM to remain powered on at all times even if the system is powered down.

## **Maintenance**

### *Carriers*

Carriers should be inspected regularly for signs of wear. Carriers landing hard at either customer or teller unit may be a sign of worn wear bands on carrier.

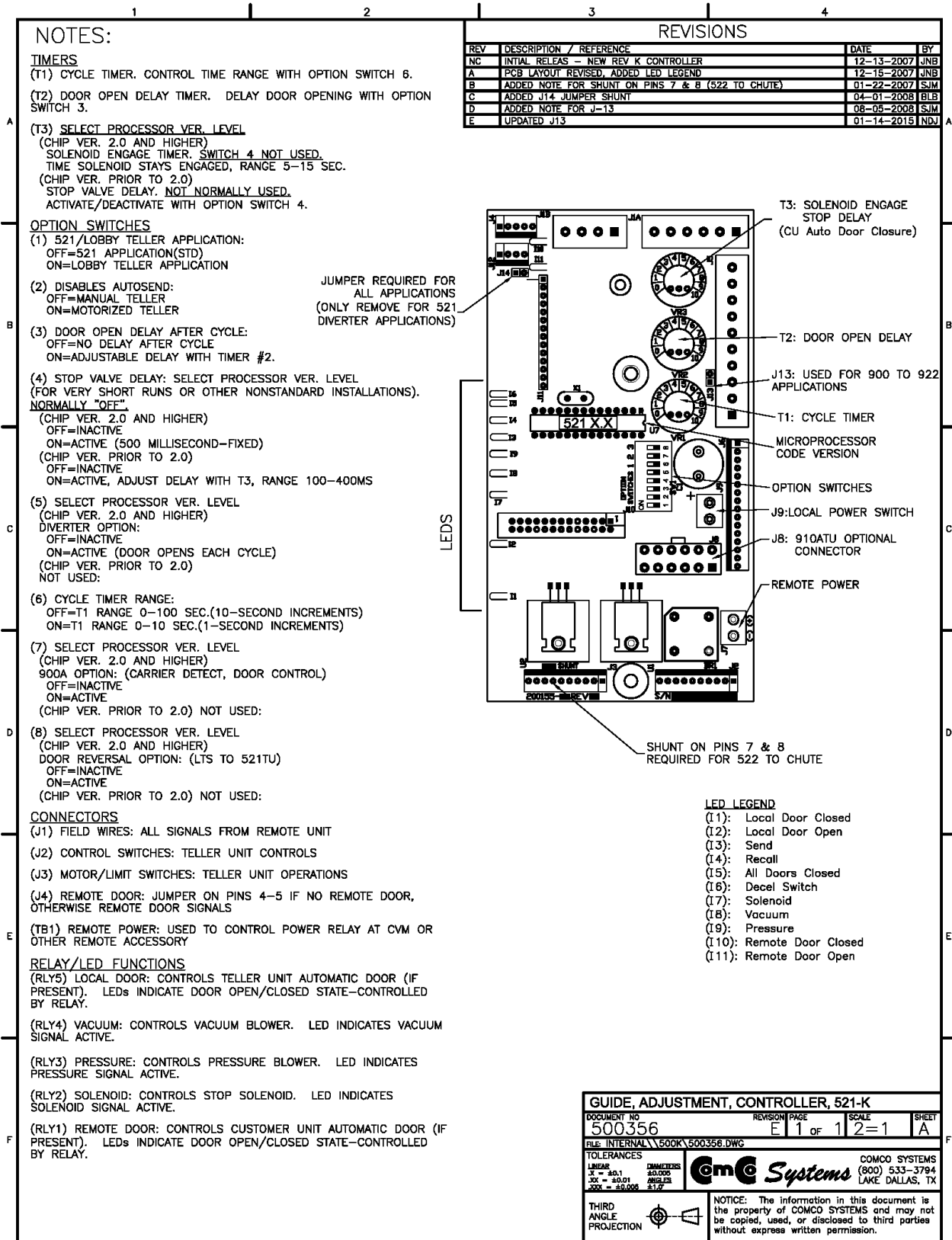
Wear bands should be replaced regularly – usually every 3-6 months, depending on usage.

### *Customer Unit & Teller Chute*

The carrier deceleration switch is required for proper operation. If it is inoperable, the carrier will land hard at the teller chute.

Carrier deceleration switches should be replaced regularly – usually every 8-9 months, depending on usage.





**Customer Unit** (P/N: 200875)

Field Service Wiring Kit				200438-3
<i>Part Number</i>	<i>Description</i>		<i>U/M</i>	<i>Quantity</i>
603149	AC Receptacle	115VAC, 20Amp	Ea	1
601479	Cable, AC Power		Ft	20
603125	Plug, 10 Position, Phoenix		Ea	3
603163	Plug, 6 Position, Wago		Ea	1
603084	Plug, 6 Position, Phoenix		Ea	1
603127	Plug, 2 Position, Phoenix		Ea	2
200465	Plug Assembly		Ea	1
500458	Service/Inst.Manual		Ea	1
500463	Field Service Wiring Kit Drawing		Ea	1

**STC2700 Teller Unit** (P/N: 200863)

Field Service Installation Kit				200745-2
<i>Part Number</i>	<i>Description</i>		<i>U/M</i>	<i>Quantity</i>
300300	Bracket, Wall, STC2700		Ea	1
401130	Escutcheon, STC2700		Ea	1
910321	Screw, Wood, #10 x 2" Phil FH, SS		Ea	4
910290	3/8 x 16 Nut, Jam, Nylon		Ea	4
500459	Field Service Installation Kit Drawing		Ea	1

# Return Material Authorization Procedure

**Please follow the instructions below to return any items to ComCo Systems for repair.**

- E-mail ComCo Systems at [parts@comcosystems.com](mailto:parts@comcosystems.com) to request a Return Materials Authorization number (RMA#).
- Please give the Customer Service Representative the following information;
  - Company Name and Phone Number
  - Company Contact
  - Store#
  - Component (s) being returned for repair
  - Description of problem
- Send your return items to the following address;

ComCo Systems  
306 W. Overly Dr.  
Lake Dallas, TX. 75065

RMA# XXXX

All RMAs will be processed in the order they are received. ComCo Systems will not accept any returns that do not have an RMA# assigned.

To check on the status of an RMA call our Customer Service Representatives with your RMA#.

**ComCo Systems**  
**[www.comcosystems.com](http://www.comcosystems.com)**

24/7 Toll Free Number  
Fax

800.533.3794  
940.222.2699

• **Customer Service & Technical Support**

[service@comcosystems.com](mailto:service@comcosystems.com)  
[support@comcosystems.com](mailto:support@comcosystems.com)

800.533.3794 Option 1

• **Parts Orders**

[parts@comcosystems.com](mailto:parts@comcosystems.com)

800.533.3794 Option 2

• **Equipment and System Sales**

[sales@comcosystems.com](mailto:sales@comcosystems.com)

800.533.3794 Option 3

• **Project Management**

800.533.3794 Option 4

• **Accounting**

[accounting@comcosystems.com](mailto:accounting@comcosystems.com)

800.533.3794 Option 5

**<https://www.facebook.com/ComcoSystems>**

**<https://twitter.com/comcosystems>**

